

PETER LARGE

ESTATE AGENTS

4 Dolhyfryd Court, Rhuddlan Road, Abergele, Conwy, LL22 7HL

£145,000

3 2 1



Available to view and with no forward chain is this well presented and contemporary top floor apartment, within a block of four. Surprisingly spacious and with modern and contemporary fittings throughout. The property comprises communal lobby with private entrance door, lengthy hallway, open plan lounge and kitchen, quality bathroom and three bedrooms, one with en suite. There is allocated parking for two cars to the rear, town centre facilities are within a short stroll and regular bus services operate nearby. A rare opportunity to acquire a large attractive apartment within Abergele town.

abergele@peterlarge.com

01745 825511

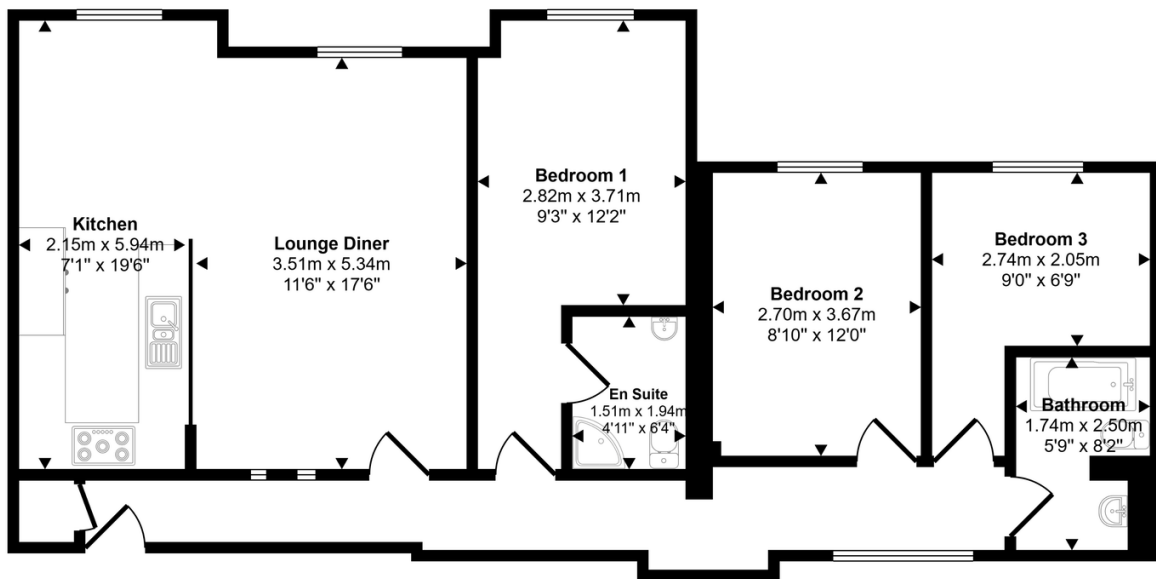
www.peterlarge.com

45-47 MARKET STREET, ABERGELE, CONWY, LL2 7AF

Key Features

- Modern top floor apartment
- Open plan lounge and kitchen
- Ensuite facility
- Allocated parking for two vehicles
- Council tax band - D
- Close to Abergele town centre
- Three bedrooms
- No forward chain
- EPC rating - C
- Leasehold

Approx Gross Internal Area
87 sq m / 939 sq ft



Floorplan

This floorplan is only for illustrative purposes and is not to scale. Measurements of rooms, doors, windows, and any items are approximate and no responsibility is taken for any error, omission or mis-statement. Icons of items such as bathroom suites are representations only and may not look like the real items. Made with Made Snappy 360.