

West End, Walkington, Beverley, East Riding of Yorkshire, HU17 8GS

Guide Price £275,000

🛏 2 🚿 1 🚗 1

**REFERENCE BA0665**

Situated within a level walk of the village centre is this very well appointed two bedroom semi detached home, built in 2019 and being one of only three properties within this very pleasant and private cul-de-sac. This attractive home offers many fine features that are sure to appeal to those discerning buyers looking for a modern but more individual home in a non estate location.

- Lounge
- Cloakroom
- Bathroom
- Two Car Driveway
- Level Walk of Village Centre
- Well equipped Kitchen/Dining Room
- Two Generous Sized Bedrooms
- Gas CH/ Double Glazing
- Garden
- Private Cul-De-Sac

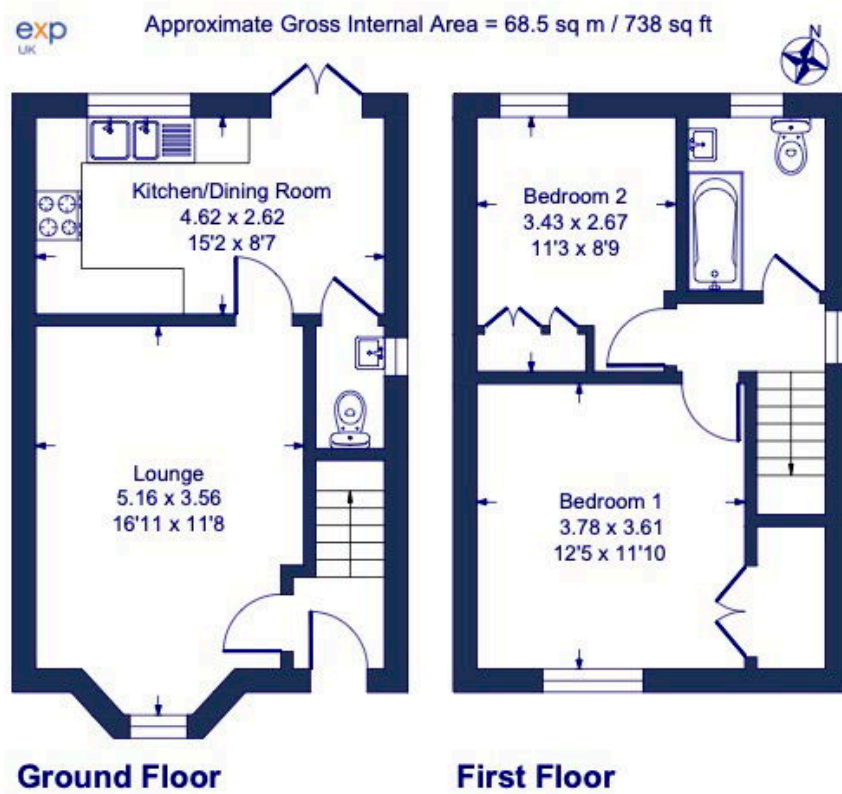


Illustration for identification purposes only, measurements are approximate, not to scale.