



HENRY  **WILTSHIRE**

www.henrywiltshire.co.uk

Henry Wiltshire Limited Company Registration No. 07120440 VAT Registration No. 994 397 354

Registered Office: 2 Laybourne House, Admirals Way, Canary Wharf, London, United Kingdom E14 9UH

Spinning Mill, Lower Vickers Street, M40 7LH

Guide Price £255,000

2 2



A THIRD FLOOR, TWO BEDROOM, TWO BATHROOM apartment in Spinning Mill a striking Grade II former textile mill located on the banks of the Rochdale Canal, to the north east of Manchester city centre.

Designed by prominent Bolton architect George Woodhouse, it's bold six-storey red-brick façade and towering chimney has dominated the local skyline for over one and a half centuries.

Although textile production ceased in the 1960's, the mill now offers luxurious one and two bedroom apartments and provides an abundance of parking for both residents and visitors (compared with typical Central Manchester developments), which have been created for professionals keen to benefit from easy access to the city centre for work and pleasure.



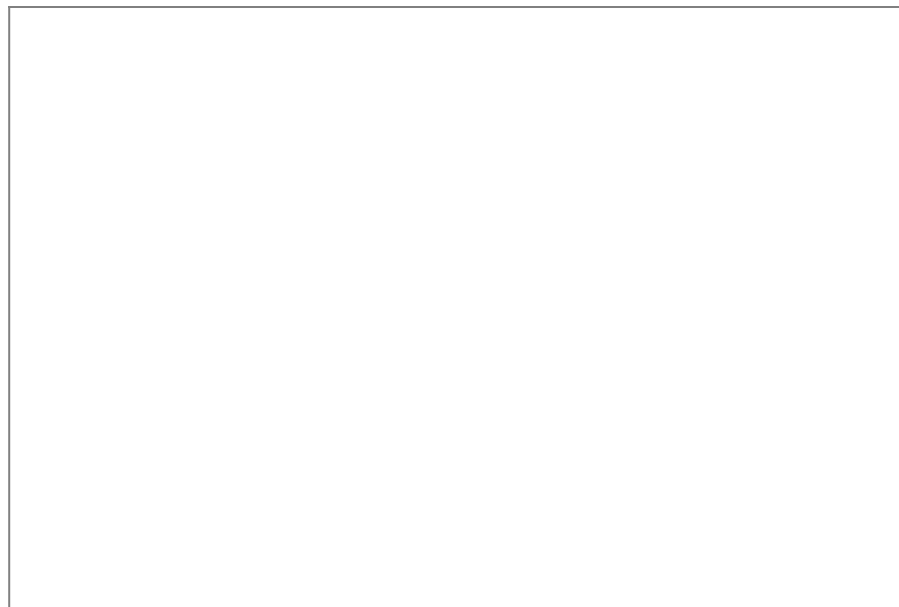
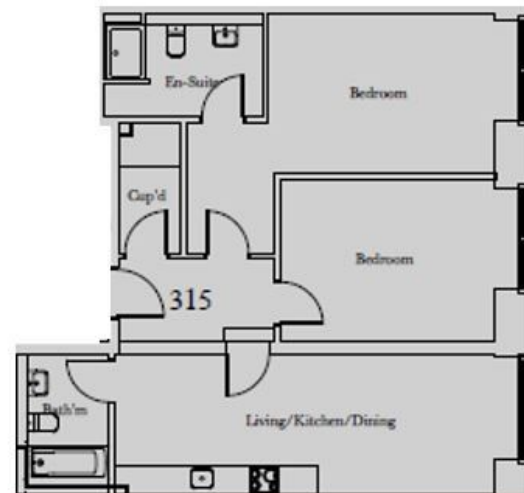
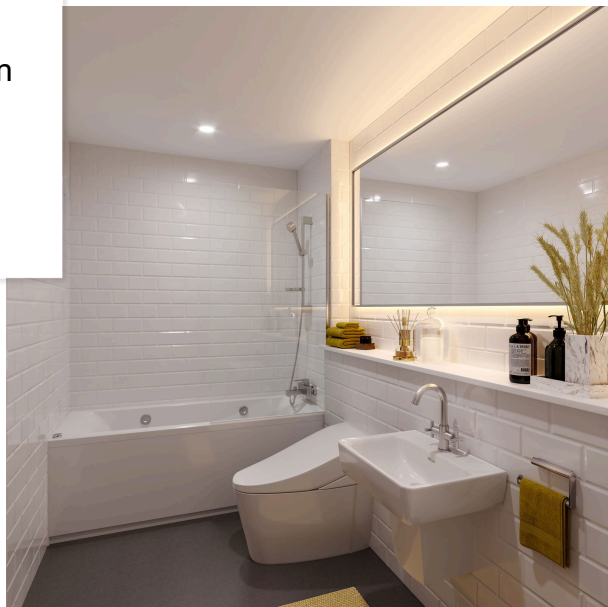


Floor Area
884 sq. ft.

Tenure
None

Service Charge
£4241.57 per annum

Ground Rent
£0 per annum



UK Offices | Canary Wharf - E14 Nine Elms - SE1 Royal Docks - E16 Bow - E3 Hayes, Middlesex - UB3 Manchester - M2

International Offices | Dublin Abu Dhabi Hong Kong Singapore

