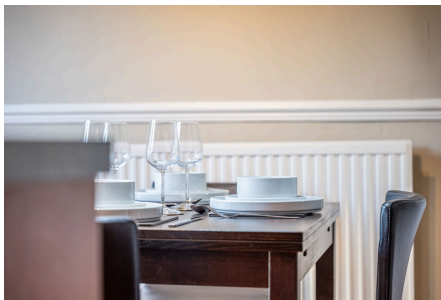


Your Logo

217 Summerwood Lane

Guide Price £190,000

3 1 0



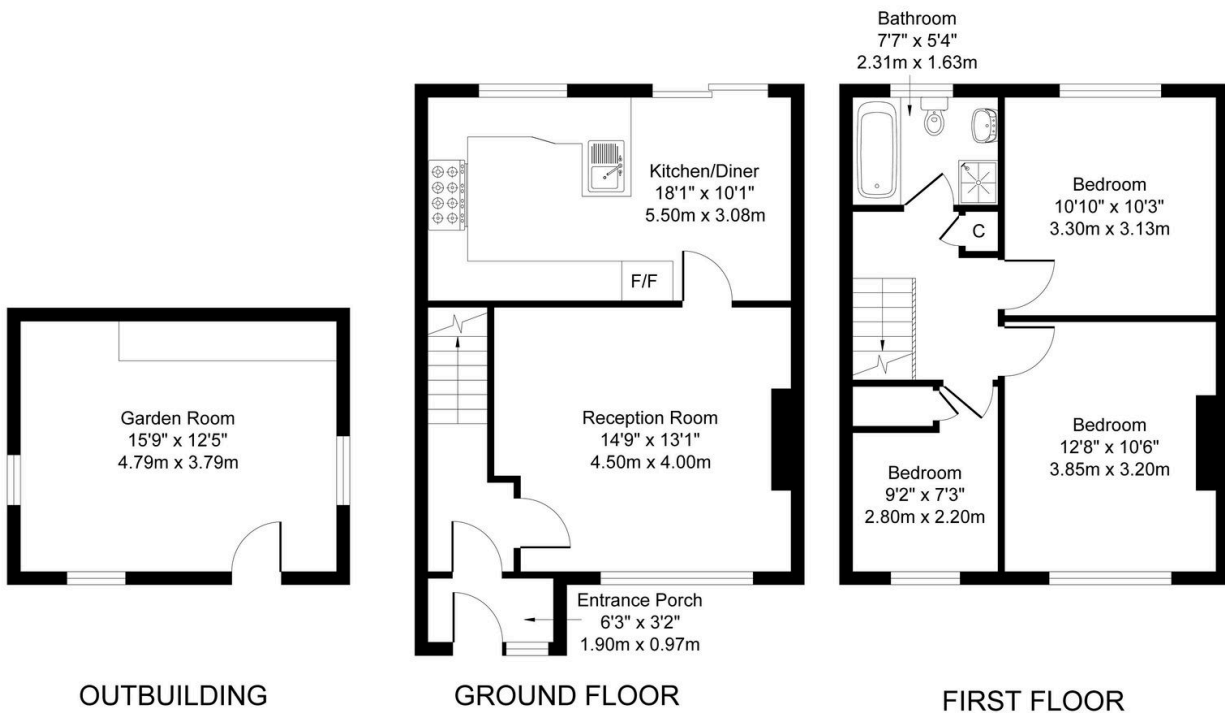
Ref: CG0973

Guide Price £190,000 - £210,000

This modern three-bedroom mid-terrace home in Clifton, Nottingham, offers a unique combination of style, comfort, and practicality. Lovingly maintained by the current owner, it is presented in impeccable condition, requiring very little further work and ready to welcome its new owners. The flexible layout ensures that it can adapt to suit a variety of needs, while the converted garden room and low-maintenance garden enhance the property's appeal further.

Key Features

- CG0973
- Kitchen Diner
- Modern Exterior
- Off Street Driveway Parking
- Easy M1 Access
- 3 Bedroom Family Home
- Wonderful Condition
- Large Garden Room
- Fantastic Public Transport Links
- Move Straight In



Total Approximate Floor Area
Main House - 872 Sq.ft. (81.01 sq.m.)
Outbuilding - 195 Sq.ft. (18.15 sq.m.)
Total - 1067 Sq.ft. (99.16 sq.m.)