

Bread Street, Penzance TR18

Guide Price £275,000

 3  1  1



A most delightful and extremely well presented three double bedroom 'mews style' home that is conveniently located within a stones throw of Penzance town centre. This lovely property is arranged over four floors and benefits from double glazing and a pleasant rear courtyard garden.



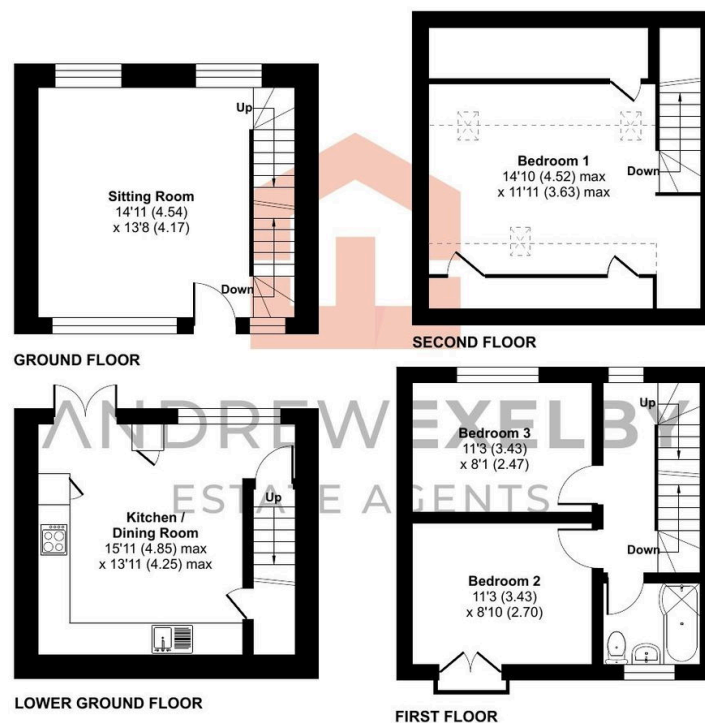
Key Features

- EXTREMELY WELL PRESENTED TOWNHOUSE
- ACCOMMODATION ARRANGED OVER FOUR FLOORS
- GAS CENTRALLY HEATED
- CLOSE PROXIMITY TO LOCAL AMENITIES
- EPC RATING - C76 / COUNCIL TAX BAND - C
- THREE DOUBLE BEDROOMS
- DOUBLE GLAZING
- PLEASANT REAR COURTYARD GARDEN
- MUST BE VIEWED TO BE APPRECIATED

Buckfield Heights, Bread Street, Penzance, TR18

Approximate Area = 935 sq ft / 86.8 sq m
Limited Use Area(s) = 147 sq ft / 13.6 sq m
Total = 1082 sq ft / 100.5 sq m

For identification only - Not to scale



Floor plan produced in accordance with RICS Property Measurement 2nd Edition, Incorporating International Property Measurement Standards (IPMS2 Residential). © nchecom 2025. Produced for Andrew Exelby Estate Agents. REF: 1255465