



ANDREW  
EXELBY  
ESTATE AGENTS

## Trevean Way, Rosudgeon TR20

Guide Price £575,000

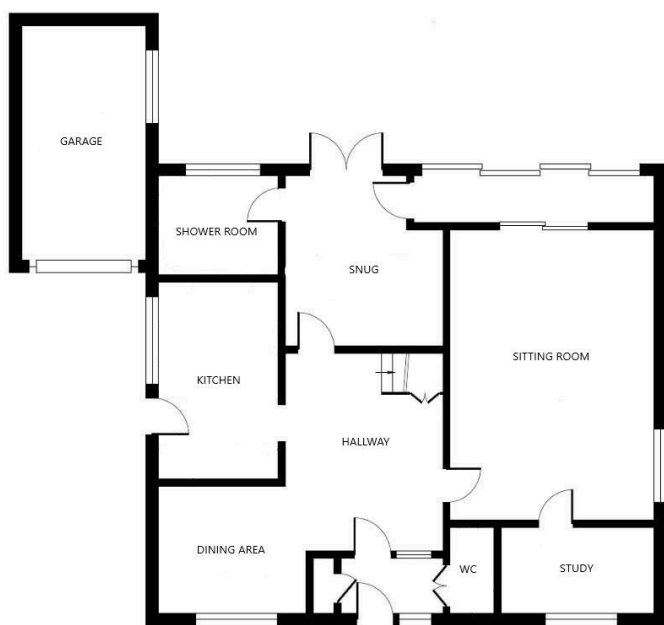
🛏 3 🚿 2 🛋 3



- SPACIOUS THREE DOUBLE BEDROOM HOME
- LARGE SOUTH FACING GARDEN TO THE REAR
- UPVC DOUBLE GLAZING
- MUST BE VIEWED TO BE APPRECIATED
- 
- LOVELY COASTAL AND COUNTRYSIDE VIEWS FROM THE REAR
- AMPLE PARKING ALONG WITH A GARAGE
- OIL FIRED CENTRAL HEATING
- EPC RATING - D62 / COUNCIL TAX BAND - E
-



ANDREW  
EXELBY  
ESTATE AGENTS



GROUND FLOOR



FIRST FLOOR

THIS FLOORPLAN IS FOR ILLUSTRATIVE PURPOSES ONLY AND IS NOT TO SCALE.

An ideal opportunity has arisen to purchase this deceptively spacious three bedroom family home that is nestled along a peaceful cul-de-sac within the village of Rosudgeon. The property itself occupies a larger than average plot and enjoys lovely far reaching countryside and coastal views from the rear. The property benefits from uPVC double glazing, ample parking along with a garage and gardens to both front and rear.