



DANIEL ARCHER

exp[®] UK

@ daniel.archer@exp.uk.com

🌐 danielarcher.exp.uk.com

☎ 07792 947 756

Motspur Park, Semi Detached - Large Garden

Guide Price £1,150,000

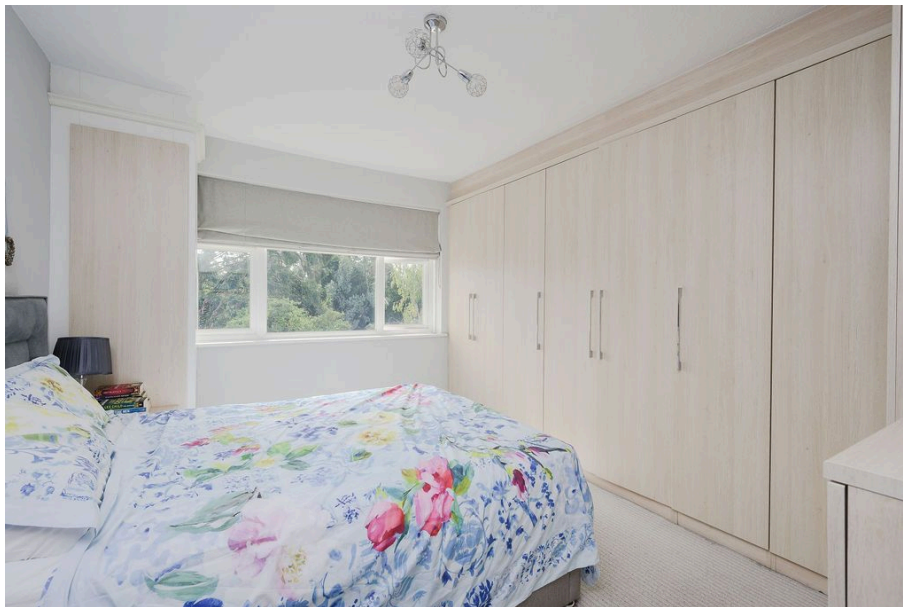
🛏 5 🪑 3 🛋 2

- Extended Five Bedroom Semi • Popular Residential Location
Detached Family Home (2,172 Sq.Ft)
- Modern Interiors and Quality Finish • Three Reception Areas
- Wonderful Well Equipped Kitchen/Diner • Three Bath/Shower Rooms (Two En-Suite)
- Large Garden with Brick Built Store • Off Street Parking and Garage to Rear
- Close to Motspur Park Station, Schools and Amenities • Property Ref: DA 0587



Beautifully presented and significantly extended five bedroom, three bathroom, semi detached family home (2,172 Sq.Ft) with off street parking, garage and large private garden. Ideally situated in a popular residential road close to Motspur Park station and amenities and offering spacious accommodation with modern interiors throughout. Property Ref: DA 0587.





West Barnes Lane

Approx Gross Internal Area

Ground Floor = 99.2 Sq m / 1067 Sq Ft

First Floor = 87.1 Sq m / 922 Sq Ft

Garage = 28.2 Sq m / 303 Sq Ft

Brick Store = 7.5 Sq m / 80 Sq Ft

Total = 202.0 Sq m / 2172 Sq Ft



Whilst every attempt has been made to ensure the accuracy of the floor plan, measurements of doors, windows and rooms are approximate and no responsibility is taken for any error or omission. This illustration is for information purposes only. Not drawn to scale, unless stated. Dimensions shown are to the nearest 1/2" and are to the points indicated by the arrow heads.

