



DANIEL ARCHER

exp[®] UK

@ daniel.archer@exp.uk.com

🌐 danielarcher.exp.uk.com

☎ 07792 947 756

Haygarth Place, Wimbledon Village

£1,350,000

🛏️ 2 🚿 2 🛋️ 1

- Two Bedrooms
- Two Bathrooms
- Through Reception room with open dining space
- Modern well equipped kitchen
- Period Charm with Modern Interiors
- Conveniently Located for Wimbledon Village High Street and Wimbledon
- Private Parking and Private Garden
- Attractive Period End of Terrace Property
- Exceptional Wimbledon Village Location
- EPC C Property Ref DA0587

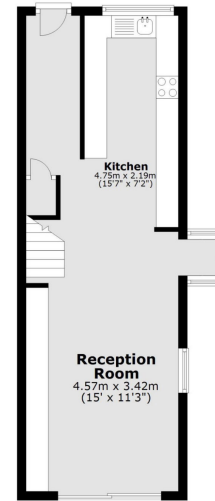


A charming period two-bedroom, two-bathroom end of terrace house with a private garden and parking, superbly located in the heart of Wimbledon Village, a picturesque setting close to the stables, boutiques and restaurants of the village and the green open spaces of Wimbledon common and excellent connections nearby with mainline and district line services at Wimbledon to central London. Property Ref: DA0587

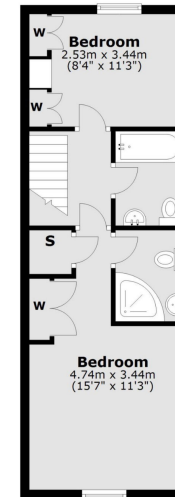




Ground Floor



First Floor



Total area: approx. 73.7 sq. metres (793.5 sq. feet)



Energy Efficiency Rating

	Current	Potential
<i>Very energy efficient - lower running costs</i>		
(92 plus) A		
(81-91) B		87
(69-80) C	70	
(55-68) D		
(39-54) E		
(21-38) F		
(1-20) G		
<i>Not energy efficient - higher running costs</i>		
England & Wales	EU Directive 2002/91/EC	