

Weston Green, Thames Ditton, KT7

Offers Over £565,000

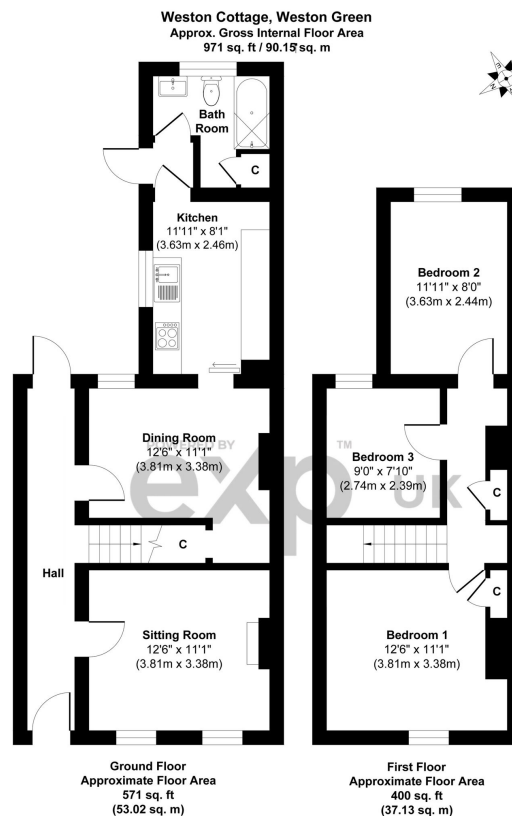
3 1 2



Attractive three bedroom semi detached property with large private garden and no onward chain, superbly situated in the heart of Weston Green, close to transport links and amenities. Offering well proportioned, character accommodation, with enormous scope for upgrade, improvement, and potential extension, STPP. Property Ref; DA0587

Key Features

- Attractive Three Bedroom Semi Detached House (971 Sq.Ft)
- Excellent Scope for Modernisation and Upgrade
- Bright and Spacious Accommodation
- No Chain
- Easy Access Shops, Schools and Amenities
- Sought After Village Location
- Potential for Extension STPP
- Large Private Garden
- Close to Esher and Thames Ditton Stations
- Property Ref; DA0587



Whilst every attempt has been made to ensure the accuracy of the floorplan shown, all measurements, positioning, fixtures fittings and any other data shown are an approximate interpretation for illustrative purposes only and are not to scale. No responsibility is taken for any errors, omission, miss-statement or use of data show
Produced by HomeFloorstudio.com