



DANIEL ARCHER

exp[®] UK

@ daniel.archer@exp.uk.com

🌐 danielarcher.exp.uk.com

☎ 07792 947 756

Tolverne Road, West Wimbledon, SW20

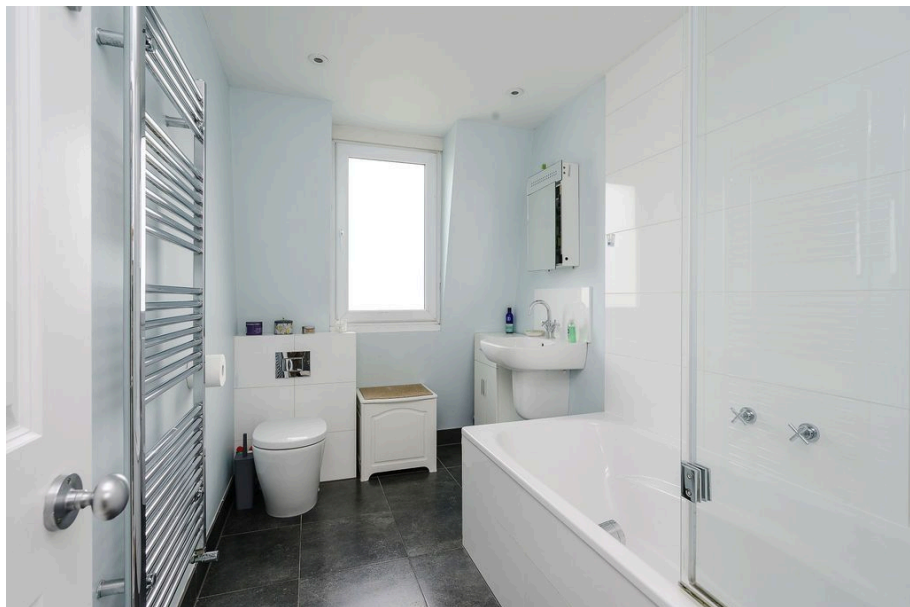
£1,250,000

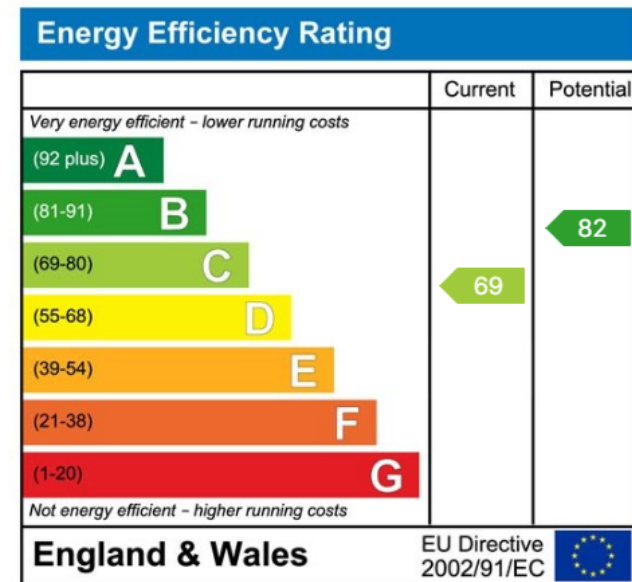
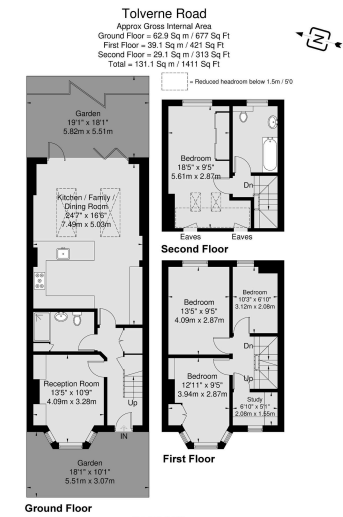
🛏️ 4 🚿 2 🚗 3

- Stunning Four Bedroom plus Study Victorian Terraced House (1,411 Sq.Ft)
- Period Elegance and Stylish Interiors
- Inviting Front Aspect Reception with Fireplace
- Delightful Low Maintenance Garden
- Easy Access Shops, Schools and Amenities
- Sought After Raynes Park/ West Wimbledon Location
- Impressive Open Plan Kitchen/Diner/Family Room
- Two Luxury Bath/Shower Rooms
- Close to Raynes Park Station
- Property Ref: DA0587



Stunning four bedroom plus study Victorian terraced family home (1,411 Sq.Ft) with all-weather surface garden, superbly situated in a sought after residential location. Offering beautifully appointed, extended living space, with a wealth of period appeal - ideal for modern family life - moments from Raynes Park station, schools and amenities. Property Ref: DA0587





eXp World UK Ltd is a registered company at Corporation Service Company (UK) Limited, 5 Churchill Place, 10th Floor, London, United Kingdom, E14 5HU. Registered company number is 12016573. VAT Registration Number is 327 4120 29