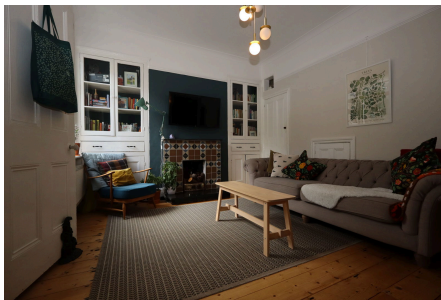


Glendower Road, Peverell, Plymouth, PL3

£250,000

🛏 2 🚿 1 🚗 1



Glad Stones Estates are delighted to present a fantastic opportunity to purchase this beautifully styled two double bedroom period mid terrace within the popular location of Peverell on the doorstep of Central Park. Offering spacious accommodation and original features throughout.



DISCLAIMER:

Whilst Glad Stones Estates strive to ensure the accuracy of all details displayed in the marketing of all properties, we must point out that information has been provided verbally by the current vendor and therefore any potential buyer must make their own investigations prior to committing to purchase the property. A conveyancer must be appointed to conduct legal investigations and the details provided in the marketing material does not form any part of the contract. Glad Stones Estates have not tested any equipment, fixtures, fittings or services within the property.

Key Features

- Beautifully Presented Period Property
- Close To A Range of Local Amenities Including Primary and Secondary Schools
- Charming Character Features Throughout
- Modern Bathroom
- EPC Grade D Council Tax Band B
- Located Within The Highly Desirable Location of Peverell
- Short Stroll T Central Park
- Two Double Bedrooms
- South Facing Garden
- VIEWING HIGHLY RECOMMENDED



DISCLAIMER:

Whilst Glad Stones Estates strive to ensure the accuracy of all details displayed in the marketing of all properties, we must point out that information has been provided verbally by the current vendor and therefore any potential buyer must make their own investigations prior to committing to purchase the property. A conveyancer must be appointed to conduct legal investigations and the details provided in the marketing material does not form any part of the contract. Glad Stones Estates have not tested any equipment, fixtures, fittings or services within the property.