



STEVEN ROSENTHAL

exp[®] UK

@ steven.rosenthal@exp.uk.com

🌐 .stevenrosenthal.exp.uk.com

☎ 07884 131 817

50 Applefield, Little Chalfont, Buckinghamshire, HP7 9NF

An excellent modern and contemporary
two-bedroom ground-floor apartment.

- Option to Buy 65% Share Subject to T's & C's
- Bright Open Plan Kitchen / Living Room
- Spacious Principal Bedroom Suite
- Allocated Residents Parking
- Private Access to Charming Communal Garden

This modern and contemporary ground-floor apartment offers the perfect blend of style and convenience, featuring two generously sized double bedrooms and exclusive private access to beautifully maintained communal gardens and a paved patio. Just a 0.25-mile stroll from Chalfont & Latimer train station, as well as a selection of local shops and restaurants, it's ideally positioned for a vibrant and connected lifestyle. Neatly presented by the current owner, the property boasts a chic white gloss kitchen complete with integrated appliances, including a fridge/freezer, oven, grill, hob, and extractor fan. The standout walk-in bay window, adorned with double doors, floods the living area with natural light and opens directly onto the charming gardens, creating a seamless indoor-outdoor experience. Further highlights include allocated residents parking and a complete chain.

Tenure: Leasehold

Lease: 125 years from 10th July 2018

Service charge: £22.69 p/w (reviewed annually)

Ground rent: £150 p/a

Council Tax Band: C

EPC Rating: B





Little Chalfont is a charming village in Buckinghamshire, England, located 2 miles east of Amersham. Well-connected by Chalfont & Latimer Station on the Metropolitan Line and Chiltern Railways, it's ideal for commuters. Renowned for excellent schools, including Dr. Challoner's High School, and a vibrant high street with shops, cafes, and essential services. Surrounded by the scenic Chiltern Hills and Chess Valley, it offers a perfect mix of community, amenities, and natural beauty.



Approximate Gross Internal Area = 62.2 sq m / 669 sq ft

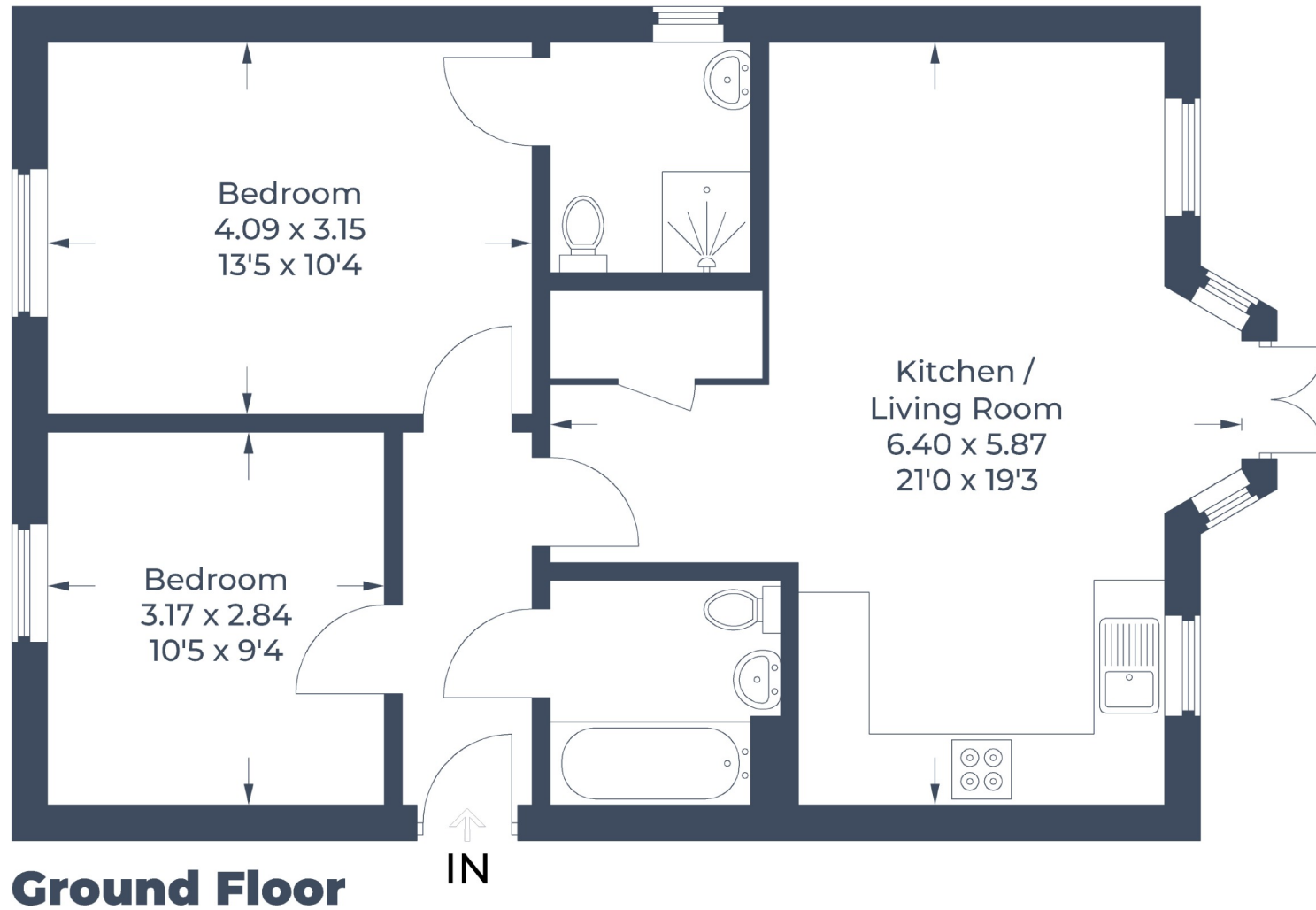


Illustration for identification purposes only,
measurements are approximate, not to scale.

© CJ Property Marketing Produced for EXP Steve Rosenthal