



smarthomes
PORTFOLIO COLLECTION



Spring Lane
Hockley Heath

**“A luxurious three bedroom bungalow,
designed for comfort and tranquility,
offering spacious living areas, modern
amenities, and an inviting atmosphere”**



CGI for illustration purposes only

Introducing this spacious three bedroom bungalow, ideally situated in the desirable village of Hockley Heath. Set on the peaceful Spring Lane, this property offers the tranquillity of rural life while being just moments from local amenities and transport links. Finished to the highest of standards and ready to occupy Winter 2024.

This exquisite new build offers a perfect blend of contemporary design and comfort.

The bungalow comes with carefully considered design and the highest standard of quality. It seeks contemporary design to create a modern feel both internally and externally. The materials and finishes have been carefully chosen to complement this stunning detached bungalow and deliver a beautiful light and luxurious home.

With a focus on sustainability, the bungalow has been cleverly designed and extended integrating modern features and technologies, insulation and under floor heating to deliver low running costs.

This beautiful bungalow is situated in the very popular semi rural location known as Hockley heath in Solihull. Beautiful countryside walks can be found close by and just a short walk to local shops restaurants and public transport services. Everything is close at hand!

Spacious Living: Enjoy an open-plan living space that seamlessly connects the lounge, dining, and kitchen areas, perfect for entertaining and family gatherings.

High-End Finishes: Experience premium finishes throughout, including stylish flooring, elegant fixtures, and top-of-the-line appliances.

Three Generously Sized Bedrooms: Each bedroom is designed for comfort, featuring ample storage and natural light. The master bedroom includes an en-suite for added luxury.

Private Outdoor Space: Step outside to a beautifully landscaped garden, ideal for relaxing or hosting outdoor gatherings.



CGI for illustration purposes only





It's all about the details....

.....Attention to detail is paramount in every aspect of this impeccable contemporary bungalow. Extended and designed to the highest standards reflect a commitment to quality that sets this bungalow apart.

The property is set behind a resin driveway providing parking for two vehicles property has a rear landscaped garden with patio area off the lounge/kitchen/diner accessed via large bi fold doors perfect for family gatherings and entertaining.

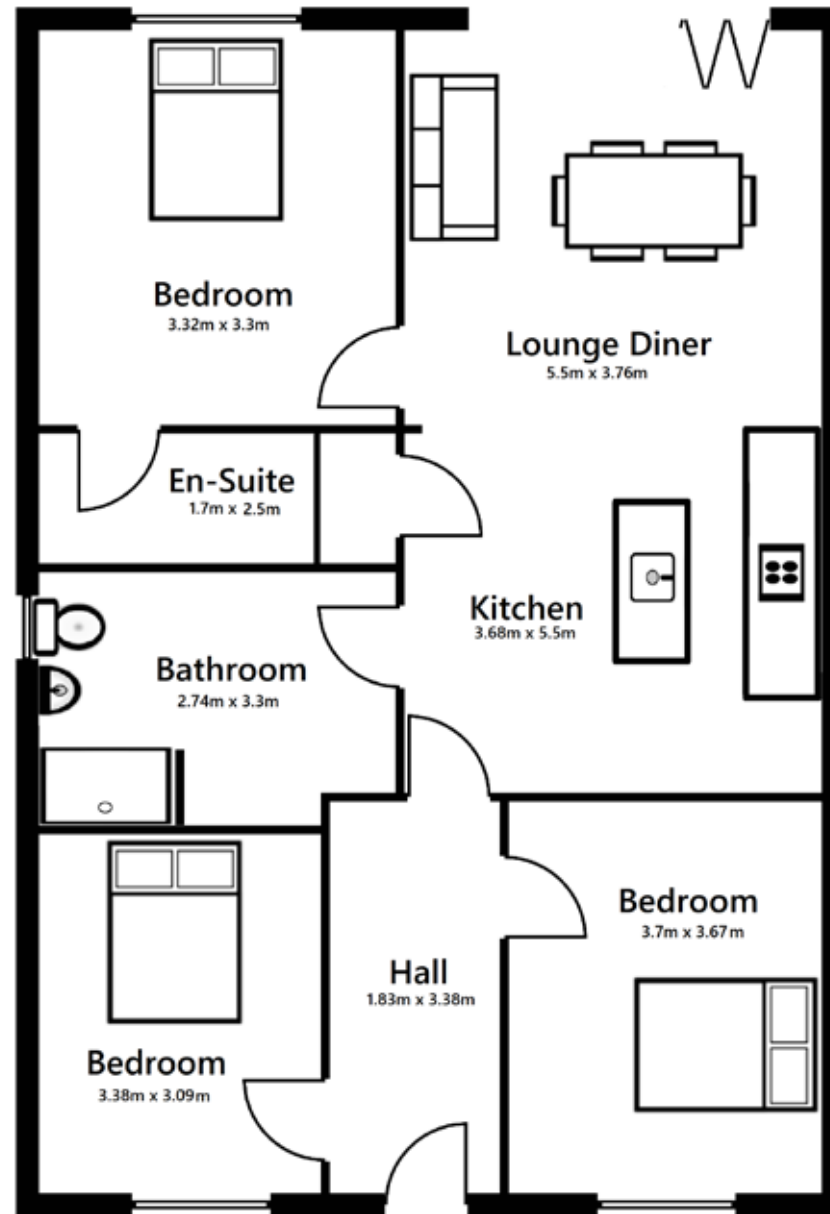
The contemporary feel of the bungalow is brimming with style with solid front door and large windows to create light and air into the reception hall. Large openings from the lounge/dining room onto the landscaped rear garden.

Inside the bungalow encompass is approximately 1200 square feet of light and airy living space. A contemporary design comprises 3 generously sized bedrooms. Each bedroom is designed for comfort, Featuring ample storage and natural light. The master bedroom includes an en suite for added luxury. The reception hall is light and beautifully designed with access to 2 of the double bedrooms and leading on to the stunning open plan living space Kitchen/Diner/Lounge.

A beautiful custom designed contemporary kitchen with contrasting colour to the breakfast island and high end integrated appliances to include fridge freezer, dishwasher, hob, extractor cooker hood, electric fan oven. Ample cupboard space and drawer space, finished off with beautiful quartz work tops.

- Open plan dining area off the kitchen providing a great area for entertaining
- A spacious open plan lounge area with a high ceiling with roof windows and large bi-fold doors
- Utility Room is off the kitchen and comes with plumbing for a washing machine and space for an additional tumble dryer
- The spacious peaceful master double bedroom and ensuite is situated off the lounge/diner
- The en-suite shower room comes with a walk in shower, wash basin and low flush WC and is fully tiled to wet areas
- Stunning family bathroom with high end sanitary ware being fully tiled in the wet areas with free standing bath, shower, WC and wash basin
- Flooring: Oak effect Herringbone LVT flooring throughout with optional choice for carpets in the bedrooms





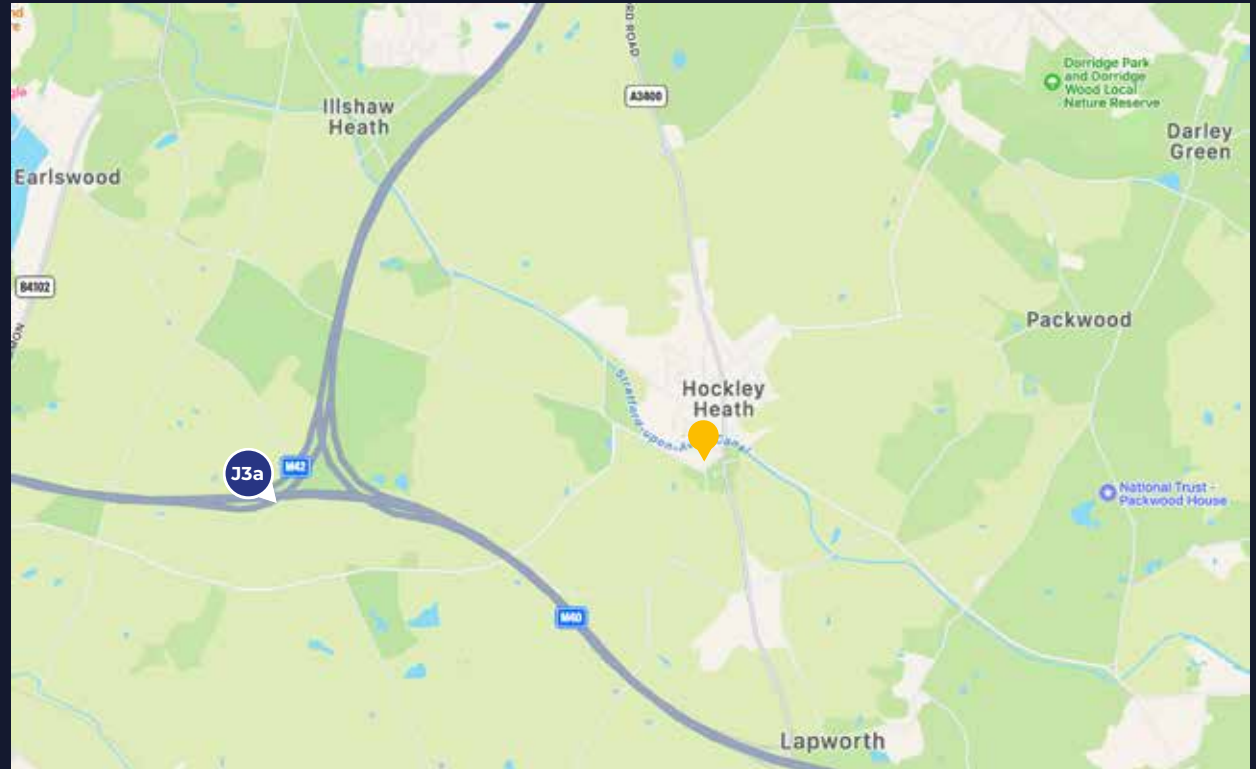


smarthomes
PORTFOLIO COLLECTION

Location

Prime Location: Situated in Hockley Heath, you'll enjoy the tranquillity of village life while being conveniently close to Birmingham and major transport links.

EPC RATING A



General Information

Agents Note

We have not tested any of the electrical, central heating or sanitary ware appliances. Purchasers should make their own investigations as to the workings of the relevant items. Subjective comments in these details imply the opinion of the selling Agent at the time these details were prepared. Naturally, the opinions of purchasers may differ. These sales details are produced in good faith to offer a guide only and do not constitute any part of a contract or offer. We would advise that fixtures and fittings included within the sale are confirmed by the purchaser at the point of offer. Images used within these details are under copyright to smarthomes Portfolio Collection and under no circumstances are to be reproduced by a third party without prior permission.

Anti Money Laundering (AML)

We will appreciate your co-operation in fulfilling our requirements to comply with anti money laundering regulations. As well as traditional methods of producing photographic ID and proof of address, smarthomes Portfolio Collection as the Agent may also use an electronic verification system to meet compliance obligations for AML. This system allows us to verify you from basic details. You understand that we will undertake this search for the purpose of verifying your identity. Any personal data we receive from you for the purpose of money laundering checks will be processed only for the purposes of preventing money laundering.

Contact Us

316 Stratford Road
Shirley
Solihull
B90 3DN

Tel: 0121 744 4144 opt 3
portfolio@smart-homes.co.uk

www.smart-homes.co.uk

PROPERTY MISDESCRIPTIONS ACT:

Smarthomes have not tested any equipment, fixtures, fittings or services mentioned and do not by these Particulars or otherwise verify or warrant that they are in working order. All measurements listed are given as an approximate guide and must be carefully checked by and verified by any Prospective Purchaser. These particulars form no part of any sale contract. Any Prospective Purchaser should obtain verification of all legal and factual matters and information from their Solicitor, Licensed Conveyancer or Surveyors as appropriate.