



Hermitage Court
Oadby | LE2 5QQ

SIGNATURE.
HOMES OF MIDLANDS

HERMITAGE COURT

A beautifully presented two-bedroom, first-floor apartment is located in a sought-after gated development in Oadby, offering a stylish and low-maintenance living space, ideal for first-time buyers or buy-to-let investors.



FIRST IMPRESSIONS

This beautifully presented two-bedroom, first-floor apartment is located in a highly sought-after gated development in the heart of Oadby, offering a stylish and contemporary living space that is ready to move into. With the significant advantage of no upward chain, it is ideally suited to first-time buyers looking to step onto the property ladder, buy-to-let investors seeking a lucrative addition to their portfolio, or anyone searching for a low-maintenance yet elegant home. Situated just a short walk from Oadby town centre, the apartment benefits from easy access to a variety of amenities, including boutique shops, vibrant cafes, and leisure facilities, while its secure setting provides a peaceful and welcoming environment.

Stepping into the property, you are greeted by a generously sized entrance hall that sets the tone for the rest of the apartment. This wide, airy space provides easy access to all rooms and includes convenient storage cupboards to keep the space organized. The standout feature of the apartment is the stunning open-plan living and kitchen area, designed to be both functional and inviting. This light-filled and inviting space is beautifully illuminated by natural light streaming through the south-facing French doors, which open onto a charming Juliet balcony that provides delightful views of the impeccably maintained development.

The kitchen boasts a range of high-quality fitted appliances, including a slim-line dishwasher, washing machine, integrated fridge-freezer, and a sleek five-ring gas hob with an extractor hood. Ample base and wall units provide excellent storage, while the layout is designed to ensure meal preparation is both efficient and convenient.













BOSCH

1 600 000 000

BOSCH

HV98E



The apartment has two large double bedrooms, both well-sized and versatile, ideal for relaxing or using as a home office. The family bathroom includes a modern three-piece suite with a bathtub, overhead shower, and a sleek vanity unit for added style.

Additional features enhance the property's appeal, including secure entry via a fob-intercom system for peace of mind, lift access to all floors for convenience, and allocated off-road parking with additional resident spaces available. The development itself, Hermitage Court, is surrounded by immaculately maintained communal gardens that create a serene and picturesque environment for residents to enjoy.

Professionally managed and regularly tended, this property represents an exceptional opportunity to secure a chic and convenient home in a highly desirable location. Combining modern interiors, practical features, and a prime setting close to the heart of Oadby, this apartment is not to be missed.









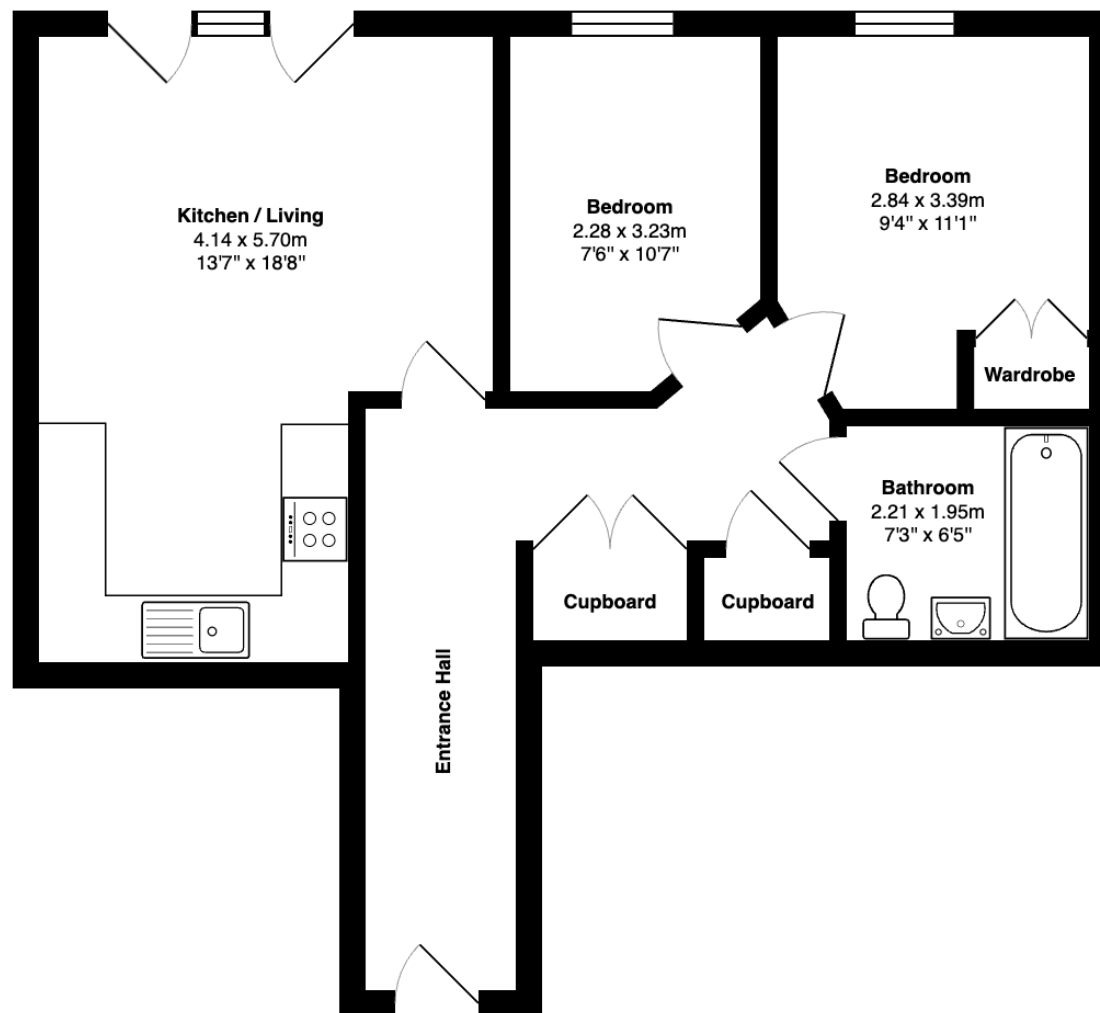












First Floor Apartment

Total Area: 57.7 m² ... 621 ft² (excluding terrace)

All measurements are approximate and for display purposes only

Signature Midlands

Tel: +44 (0) 116 482 2299

hello@signaturemidlands.co.uk

40 The Parade, Oadby, Leicester LE2 5BF

SIGNATURE.
HOMES OF MIDLANDS