



Dene Place, Sheffield, S13 9DN

Offers Over £240,000

3 2 2



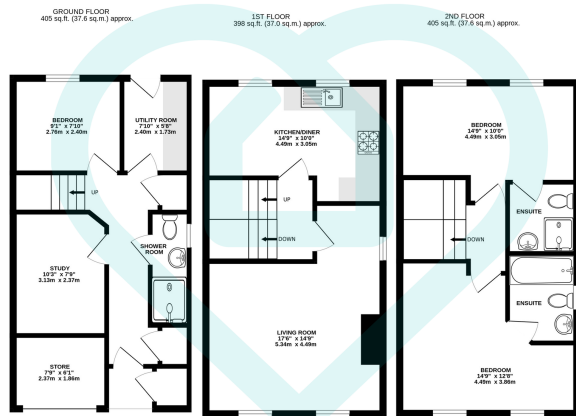
Why We Love It

Residents enjoy a wealth of amenities, from the local shops and cafes to major supermarkets just a short drive away. Exceptional transport links, including access to the M1 and regular bus services into Sheffield city centre, Handsworth offers the best of suburban living with urban convenience.

Why You'll Love It

Lovingly maintained by its current owner, this home is perfect for modern family life. The ground floor offers a practical and flexible layout with a study, ideal for working from home. A generously sized third bedroom, and a sleek shower room. This floor is perfect for accommodating teenagers seeking independence or as a private guest area. A utility room with garden access adds further convenience, providing space for washing machines, dryers, and storage. The first floor is the social hub of the home. The contemporary kitchen-diner boasts ample worktop space and storage, making it a dream for culinary enthusiasts and family mealtimes. To the front of the property, the spacious living room is bathed in natural light from multiple windows, creating a warm and welcoming atmosphere—a perfect spot to unwind or entertain friends and family. The top floor is a private sanctuary, featuring two large double bedrooms, each complete with its own en-suite bathroom. This arrangement offers a luxurious retreat for every member of the household. Outside, the property features a generously sized garden, ideal for creating your own outdoor haven, and off-road parking at the front—a must-have feature for modern living. The area is renowned for its excellent schools, such as Athelstan Primary and Handsworth Grange, making it a sought-after location for families. The suburb is well-connected, with exceptional transport links including regular bus services to Sheffield city centre and easy access to the M1 motorway, ideal for commuters. For those who enjoy outdoor activities, Handsworth boasts parks, green spaces, and leisure facilities, offering ample opportunities to relax, exercise, or socialize. With its vibrant community and ideal balance of suburban charm and urban convenience, Handsworth is a location that truly has it all.



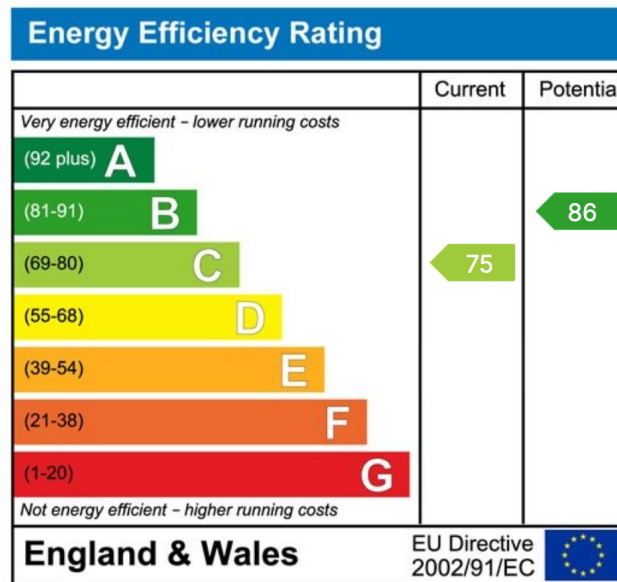


TOTAL FLOOR AREA: 1209 sq.ft. (112.3 sq.m.) approx.

This floor plan is for illustrative purposes only. All measurements and layouts are approximations and do not necessarily capture the precise specifications of the property. No responsibility is taken for any error, omission, or misstatement. We always recommend viewing in person to confirm the exact floor plan of a property. Made with Metropix.



- Three Bedrooms
- Ground Floor Study Area
- Practical Utility Room
- Spacious Kitchen/Diner
- Living Room With Plenty Of Natural Light
- Well Maintained Private Garden
- Off Road Parking
- Proximity To Good Schools
- Great Transport Links
- Wonderful Family Home



Sales | Lettings | New Homes

VAT Reg Number: 191 3588 84
 Company Reg Number: 08610489
 Company Reg Address: 67 Middlewood Road, Hillsborough, Sheffield, S6 4GX.

The MorfittSmith Building
 67 Middlewood Road
 Hillsborough
 Sheffield
 S6 4GX

Get in touch - arrange an appointment

- 0114 232 1764
- sales@morfittsmith.co.uk
- lettings@morfittsmith.co.uk
- newhomes@morfittsmith.co.uk
- www.morfittsmith.co.uk

- @MorfittSmith
- @MorfittSmith
- MorfittSmith Estate & Letting Agent