

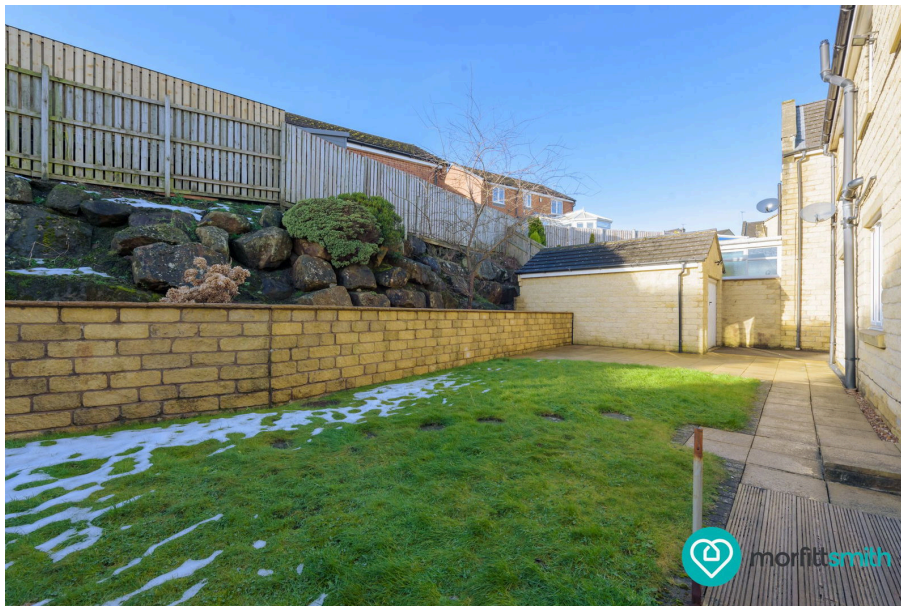




# Queenswood Gate, Wadsley Park Village, S6 1RL

Offers Over £400,000

🛏 4 🍳 2 🛋 2





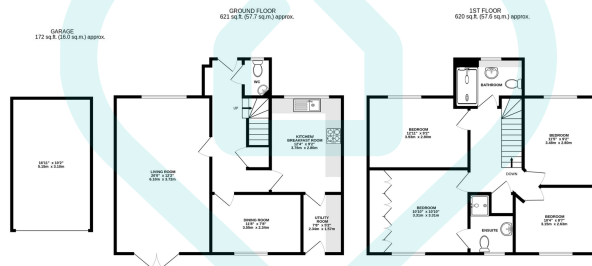
### Why You'll Love It

From the moment you step into Queenswood Gate, you'll be captivated by its welcoming ambiance and practical layout. The ground floor is designed for modern family living, with a spacious entrance hallway leading to two beautifully proportioned reception rooms. The main lounge is warm and inviting with patio doors into the garden creating a seamless indoor-outdoor living experience. The second reception room is a versatile space, ideal as a dining room, home office, or playroom. The kitchen is fitted with appliances, generous storage, and countertops, offering a perfect balance of practicality and design. Off the kitchen is the utility room, a great space with more storage and access to the landscaped garden. Upstairs, the four double bedrooms provide ample space for a growing family, with the master bedroom boasting an en-suite bathroom. The sleek family bathroom is thoughtfully appointed with modern fittings. A downstairs W.C. completes the functional layout. This home is a perfect blend of comfort, elegance, and practicality, ideal for families and entertainers alike.

### Why We Love It

Located in the sought-after Wadsley Park Village, S6, Queenswood Gate enjoys a prime position within one of Sheffield's most desirable residential areas. Originally the site of the historic Middlewood Hospital, the area has been thoughtfully redeveloped into a modern community that retains its historic charm. The village is surrounded by green spaces, including Wadsley and Loxley Commons, offering endless opportunities for walking, cycling, and outdoor adventures. Families will appreciate the excellent local schools and the variety of child-friendly activities nearby. The area also benefits from fantastic transport links, with regular bus services and easy access to the A61, making travel to Sheffield city centre and the motorway network straightforward. For shopping and leisure, Hillsborough offers a vibrant mix of supermarkets, independent stores, and cafes, while Hillsborough Park provides a picturesque retreat. Residents of Wadsley Park Village enjoy a strong sense of community, with a tranquil yet connected lifestyle that perfectly suits families and professionals.



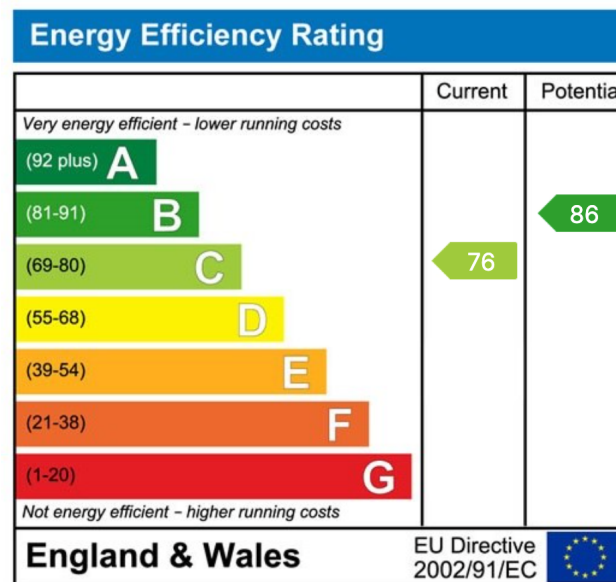
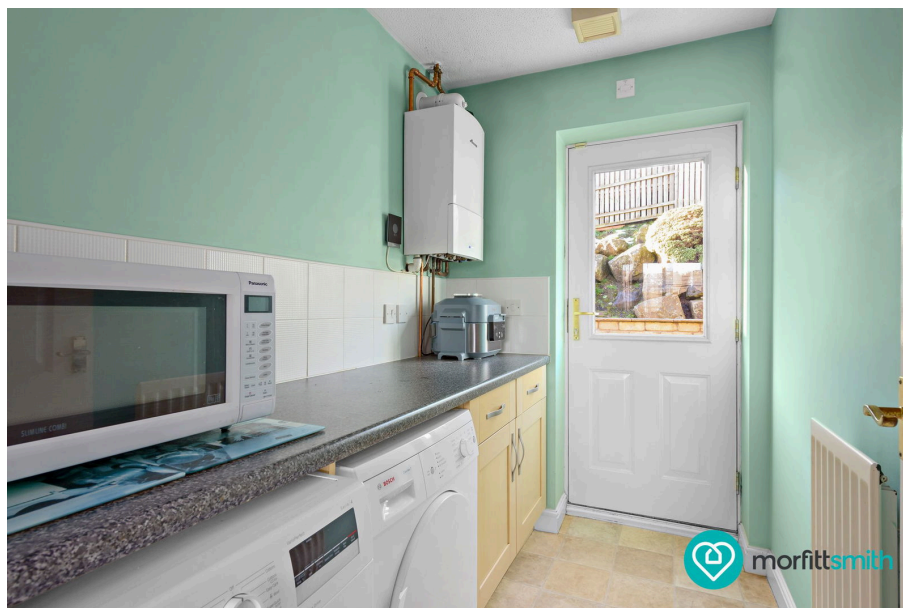


TOTAL FLOOR AREA : 1413 sq.ft. (131.3 sq.m.) approx.

This floor plan is for illustrative purposes only. All measurements and layouts are approximations and do not necessarily capture the precise specifications of the property. No responsibility is taken for any error, omission, or misstatement. We always recommend viewing in person to confirm the exact floor plan of a property. Made with Metropix.



- Four Double Bedrooms
- Great Family Home
- No Chain
- Two Reception Rooms
- Driveway for Several Cars
- Wadsley Park Village Location
- Great Transport Links
- Wonderful Local Amenities
- Easy Access to Green Space
- Good School Catchment



## Sales | Lettings | New Homes

VAT Reg Number: 191 3588 84  
Company Reg Number: 08610489  
Company Reg Address: 67 Middlewood Road, Hillsborough, Sheffield, S6 4GX.

The MorfittSmith Building  
67 Middlewood Road  
Hillsborough  
Sheffield  
S6 4GX

## Get in touch - arrange an appointment



0114 232 1764



sales@morfittsmith.co.uk  
lettings@morfittsmith.co.uk  
newhomes@morfittsmith.co.uk



www.morfittsmith.co.uk



@MorfittSmith



@MorfittSmith



MorfittSmith  
Estate & Letting Agent