



Woodall Road, Killamarsh, S21 2EW

Offers In Region Of £700,000

4 3 2



An extraordinary family home nestled within approximately an acre of private grounds offered with no chain – complete with its own fishing lake! This is countryside living with a touch of luxury. Welcome to Woodall Road – a truly remarkable home that blends generous interiors with a show-stopping outdoor setting. Tucked away in a desirable part of Killamarsh, this four to five bedroom residence offers a rare lifestyle opportunity: space, flexibility, and your own slice of nature.

Why You'll Love It:

Set within approx. one acre of beautifully private grounds, this extended family home is unlike anything else in the area. Inside, you'll find over 170m² of well-appointed accommodation, perfect for growing families, home workers, or multi-generational living. Step outside and the magic continues: a private fishing lake lies just beyond the garden – a serene escape that's all yours.

Ground Floor:

The home opens into a welcoming entrance hall, leading into an expansive living room – the perfect place to relax in front of the log burner. Flow through into a generous open-plan kitchen and dining area, ideal for both everyday family life and entertaining.

To the rear, a more private wing offers real flexibility, with a large family room with log burner, a double bedroom, a contemporary shower room, and a separate laundry/utility room. This space is perfect for guests, older children, or as an independent living area.

First Floor:

Upstairs, four more bedrooms provide plentiful space. The primary bedroom enjoys views over the grounds and boasts a stylish en-suite and walk-in wardrobe. A second bathroom and further double rooms complete the layout, all finished to a high standard with neutral tones and quality fittings.

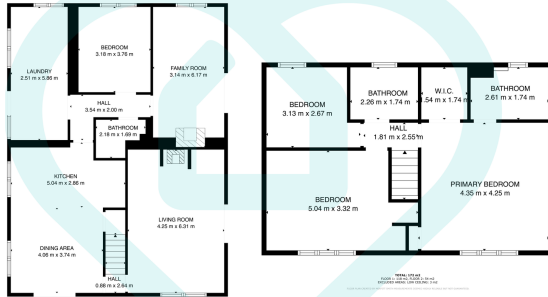
The Grounds:

Step outside and take it all in: your very own slice of countryside. The property sits on approximately one acre, with expansive lawns, mature trees, and a feeling of total privacy. And then there's the lake – a rare and tranquil feature that's perfect for quiet mornings, family picnics, or a spot of fishing at the weekend. This is a home where every day feels like a retreat.

In Summary:

This is more than a home – it's a lifestyle.

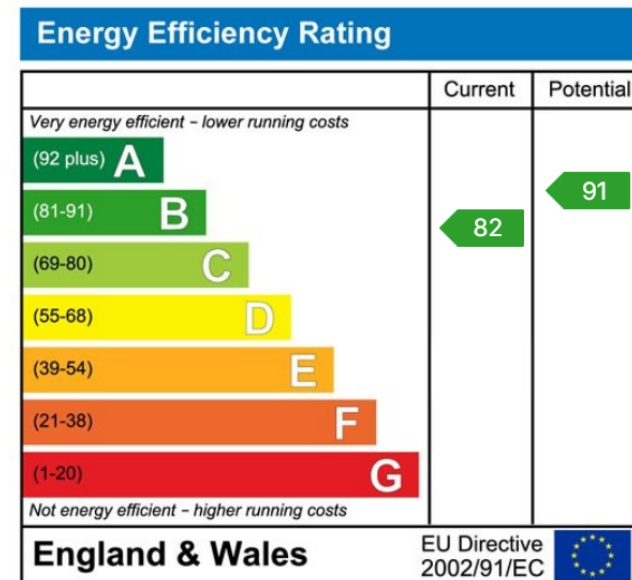




This floor plan is for illustrative purposes only. All measurements and layouts are approximations and do not necessarily capture the precise specifications of the property. No responsibility is taken for any error, omission, or misstatement. We always recommend viewing in person to confirm the exact floor plan of a property. Made with Metropix.



- No Chain
- Includes Its Own Small Private Fishing Lake
- Five Generously Sized Bedrooms
- Expansive Dual-Aspect Living Room
- Open-Plan Kitchen And Dining Area
- Plenty Of Off Road Parking
- Private Drive With Electric Gates
- Idyllic Semi-Rural Setting In Killamarsh
- 20 Minute Drive Into Sheffield City Centre
- Stunning Outdoor Space



Sales | Lettings | New Homes

VAT Reg Number: 191 3588 84
Company Reg Number: 08610489
Company Reg Address: 67 Middlewood Road, Hillsborough, Sheffield, S6 4GX.

The MorfittSmith Building
67 Middlewood Road
Hillsborough
Sheffield
S6 4GX

Get in touch - arrange an appointment



0114 232 1764



sales@morfittsmith.co.uk
lettings@morfittsmith.co.uk
newhomes@morfittsmith.co.uk



www.morfittsmith.co.uk



@MorfittSmith



@MorfittSmith



MorfittSmith
Estate & Letting Agent