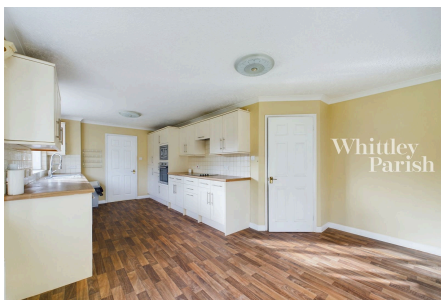


Station Road, Great Moulton, Norwich, NR15 2DX

Guide Price £425,000

4
 3
 1



The property boasts a generous layout, all on one level, ideal for both family living and entertaining, with flexible accommodation and annex potential. The sitting room is filled with natural light whilst the modern kitchen is well-equipped and opens up to a dining space, perfect for family gatherings entertaining. An impressive conservatory seamlessly links the property to the enclosed, private garden beyond. Four double bedrooms, two with en-suite facilities, offer plenty of options for the larger family or guests and there is a further family bathroom as well. A useful entrance hall/utility area has laundry facilities and houses the oil fired central heating boiler. There are also air-conditioning units in the sitting room and kitchen/diner.

Key Features

- NO ONWARD CHAIN
- Four bedrooms
- Conservatory
- Parking for many cars
- Close to bus route
- Annex potential
- Three bathrooms
- Detached garage
- Private drive
- Sought after village

