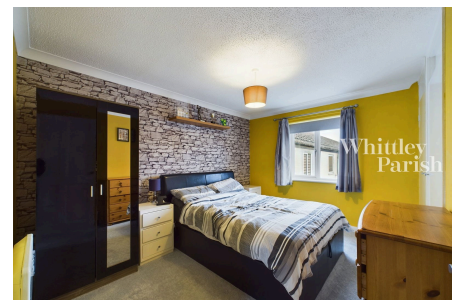


# St Leger, Long Stratton

Guide Price £200,000

2 
 1 
 1



The property comprises a two bedroom end of terrace house built of traditional brick and block cavity wall construction under a pitched tiled roof, with the benefit of replaced upvc double glazed windows and doors, whilst being heated by electric storage heater and a log burner. Consisting of entrance hall, living room, kitchen and conservatory at ground floor level and a first floor landing leading to two double bedrooms and bathroom, all totalling in the regions of 600 sq ft.

## Key Features

- 2 double bedrooms
- Upgraded & enhanced
- Walking distance to amenities
- EPC Rating
- Council Tax Band A
- En-bloc garage
- Replaced bathroom
- Freehold
- Electric heating
- Mains drainage

