



COURTNEY GREEN

Estate Agent • Letting Agent • Managing Agent

Sales:
(01403) 252222 • sales@courtneygreen.co.uk

Lettings:
(01403) 252200 • lettings@courtneygreen.co.uk

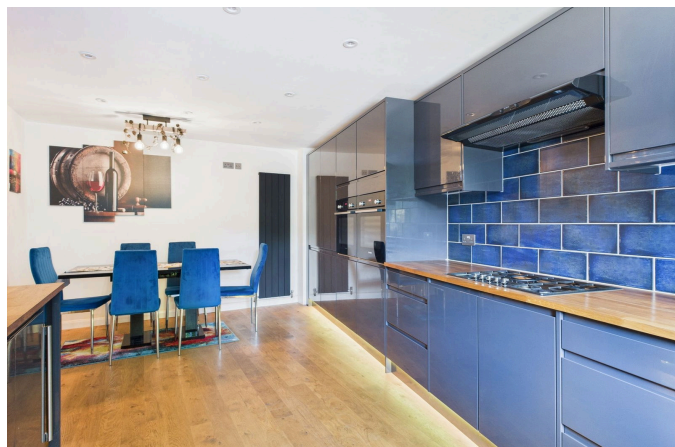
Residential Management:
(01403) 246170 • management@courtneygreen.co.uk

www.courtneygreen.co.uk

Stable Mews, Brighton Road, Horsham, West Sussex , RH13 5DE

Guide Price £625,000

🛏 2 🚿 2 🚗 1





- DETACHED MEWS STYLE HOUSE
- HALF A MILE FROM THE TOWN CENTRE
- WALKING DISTANCE TO HORSHAM STATION AND THE COUNTRYSIDE
- TIMBER CABIN/HOME OFFICE
- LARGE PRIVATE GARDEN
- DRIVEWAY AND FORECOURT PARKING
- OAK AND OINE JOINERY
- BENCHMARK KITCHEN WITH QUALITY APPLIANCES
- TWO ENSUITES
-



A highly impressive detached mews house, constructed in 2018 on the site of a former Victorian stable and forge, conveniently situated within half a mile of Horsham town centre.