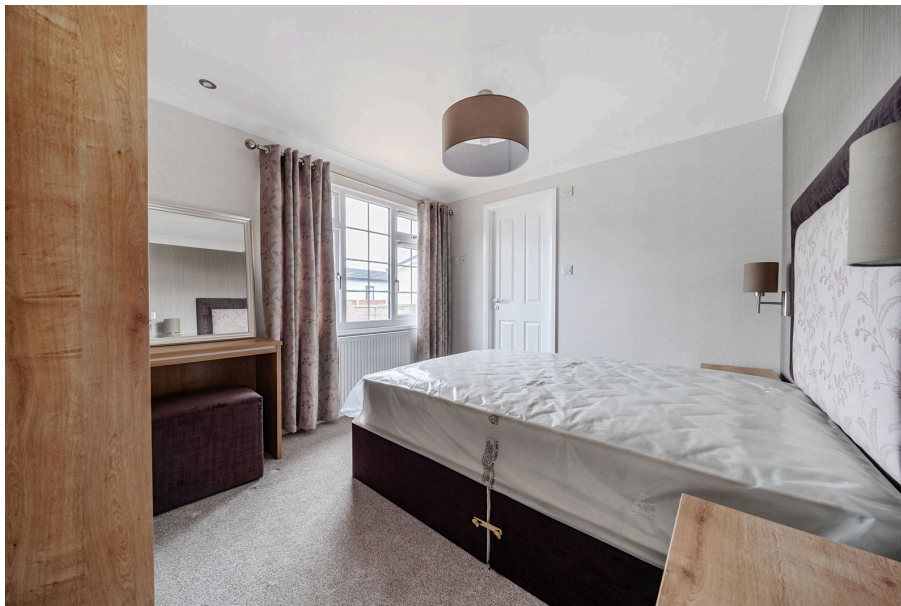




Hook Lane, Aldingbourne, Chichester, West Sussex, PO20

£240,000

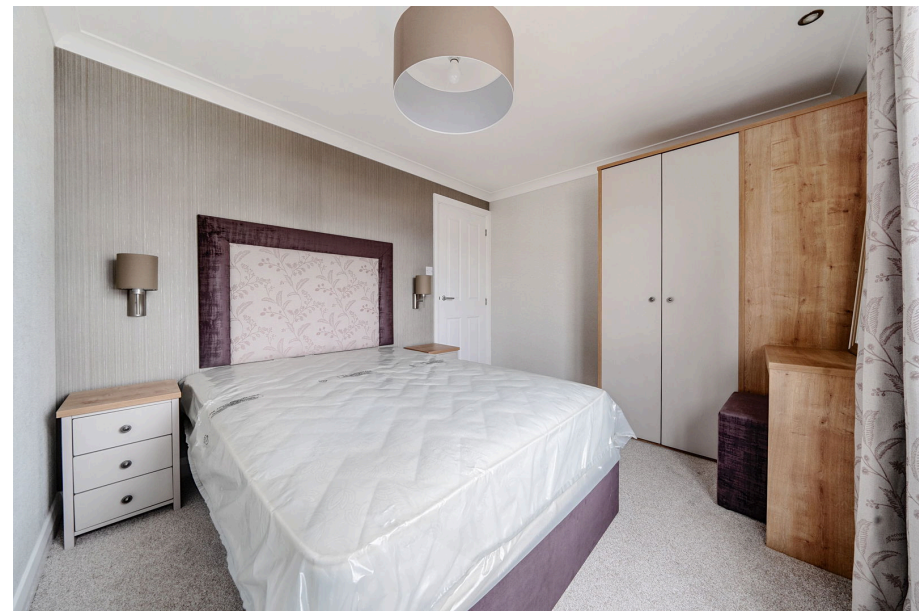
🛏️ 2 🚿 2 🚗 1



- New Park Home Bungalow
- Hazelwood Design
- Built in Wardrobes in Both Bedrooms
- Spacious Lounge/Dining Room
- Off Street Parking
- Two Double Bedrooms
- Ensuite To The Master Bedroom
- Kitchen With Integrated Appliances
- Small Garden
- Residential Park For The Over 50's

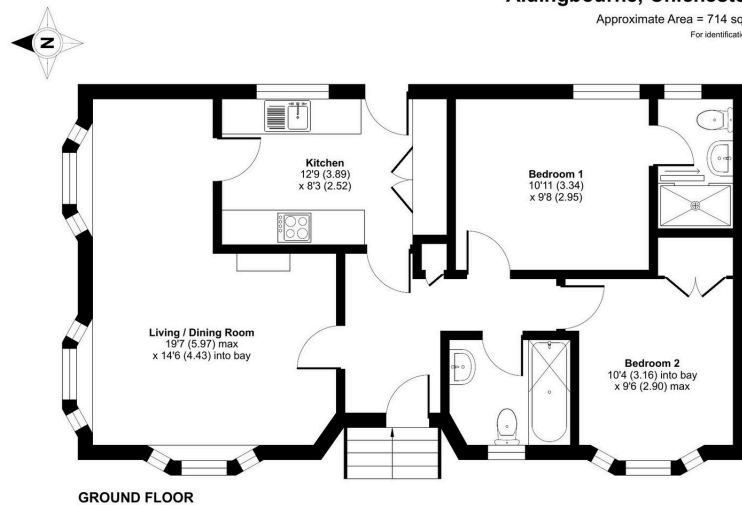


A new and fully furnished two double bedroom park home bungalow located on this sought after residential park for the over 50's. This 36'x20' home boasts an entrance hall, light and airy lounge/dining room, fitted modern kitchen with integrated appliances, a master bedroom with an ensuite shower room, guest bathroom as well as double glazing and gas central heating to radiators. Externally this home boasts gardens to all sides of the home which are designed to offer easy maintenance and there is off street parking to the side. This home is ready to view and purchase now!



Aldingbourne, Chichester, PO20

Approximate Area = 714 sq ft / 66.3 sq m
For identification only - Not to scale



Floor plan produced in accordance with RICS Property Measurement 2nd Edition, incorporating International Property Measurement Standards (IPMS2 Residential). © richvecom 2024. Produced for The Park Home Agency Ltd. REF: 1225470



01793 230185
sales@theparkhomeagency.co.uk

Agents Notes: All measurements are approximate and quoted in metric with imperial equivalents and for general guidance only and whilst every attempt has been made to ensure accuracy, they must not be relied on. The fixtures, fittings and appliances referred to have not been tested and therefore no guarantee can be given that they are in working order. Internal photographs are reproduced for general information and it must not be inferred that any item shown is included with the property. For a free valuation, contact the numbers listed on the brochure