



Woodside Park, Luton, Bedfordshire, LU1 4LP

£175,000

🛏️ 2 🍽️ 1 🚗 1



- Detached Park Home Bungalow
- Popular Residential Park
- Gas Central Heating
- Gardens to all sides
- Sought After Location
- Two Double Bedrooms
- Spacious Lounge/Dining Room
- Double Glazing
- CASH BUYERS ONLY!
- End Of Chain Sale

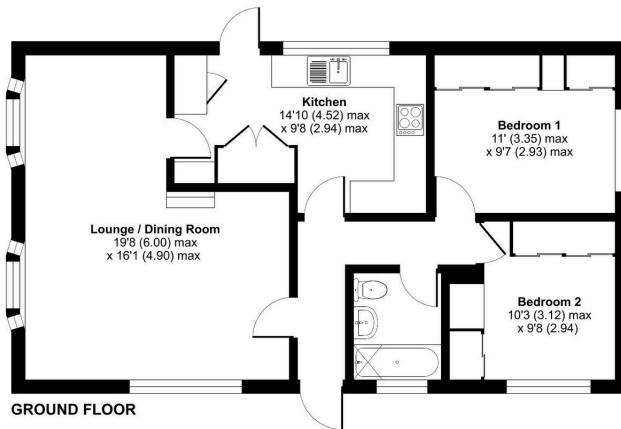


A spacious two double bedroom (36'x20') park home bungalow situated close to the outskirts of this sought after residential park near Luton. This home is well presented and is offered with no onward chain, ideal for those wanting to move quickly. Internally there is a separate entrance hall, an L-Shaped lounge/dining room, a kitchen with a range of matching wall and base units as well as two double bedrooms, both having built in wardrobes and there is a bathroom with a modern fitted suite. The home is double glazed, gas central heating to radiators and the home offers the space and layout which will appeal to many buyers. There is a generous plot with gardens to all sides of the home which is partly laid to lawn with a range of shrubs and flower beds and borders as well as a paved area to the rear.



Woodside Home Park, Woodside, Luton, LU1

Approximate Area = 712 sq ft / 66.1 sq m
For identification only - Not to scale



Floor plan produced in accordance with RICS Property Measurement 2nd Edition, incorporating International Property Measurement Standards (IPMS2 Residential). © richvecom 2024. Produced for The Park Home Agency Ltd. REF: 1220261



01793 230185
sales@theparkhomeagency.co.uk

Agents Notes: All measurements are approximate and quoted in metric with imperial equivalents and for general guidance only and whilst every attempt has been made to ensure accuracy, they must not be relied on. The fixtures, fittings and appliances referred to have not been tested and therefore no guarantee can be given that they are in working order. Internal photographs are reproduced for general information and it must not be inferred that any item shown is included with the property. For a free valuation, contact the numbers listed on the brochure