





# The Summit, Dales View Park, Salterforth

£144,500

🛏️ 2 🚿 1 🚗 1



- Detached Park Home
- Residential Park For The Over 45's
- Two Double Bedrooms
- Well Presented Accommodation
- Double Glazing
- Gas Central Heating
- Gardens To All Sides
- Off Street Parking
- CASH BUYERS ONLY!
- No Stamp Duty To Pay





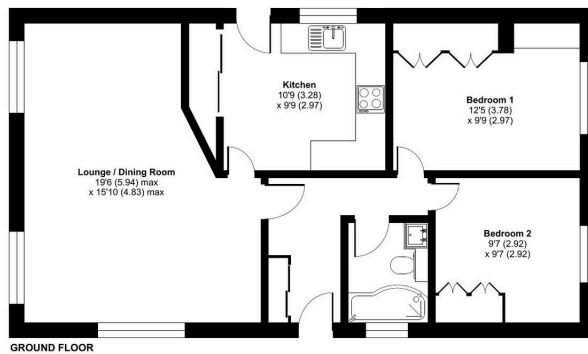


A delightfully presented two double bedroom park home bungalow located on a sought after residential park for the over 45's. This home must be viewed to appreciate all that it has to offer and boasts an entrance hall, a light and airy lounge/dining room, a modern fitted kitchen, two double bedrooms with built-in wardrobes in both bedrooms and these are complimented by a modern fitted bathroom. Externally there are gardens to all sides with artificial lawn, flower beds and borders and off street parking for one car. A viewing is essential!



**The Summit, Dales View Park, Salterforth, Barnoldswick, BB18**

Approximate Area = 743 sq ft / 69 sq m  
For identification only - Not to scale



Floor plan produced in accordance with RICS Property Measurement 2nd Edition, incorporating International Property Measurement Standards (IPMS2 Residential). © richvecom 2024. Produced for The Park Home Agency Ltd. REF: 1216912



01793 230185

sales@theparkhomeagency.co.uk

Agents Notes: All measurements are approximate and quoted in metric with imperial equivalents and for general guidance only and whilst every attempt has been made to ensure accuracy, they must not be relied on. The fixtures, fittings and appliances referred to have not been tested and therefore no guarantee can be given that they are in working order. Internal photographs are reproduced for general information and it must not be inferred that any item shown is included with the property. For a free valuation, contact the numbers listed on the brochure