

**Hallett Close, Latchbrook, Saltash, PL12 4UD**

Guide Price £295,000

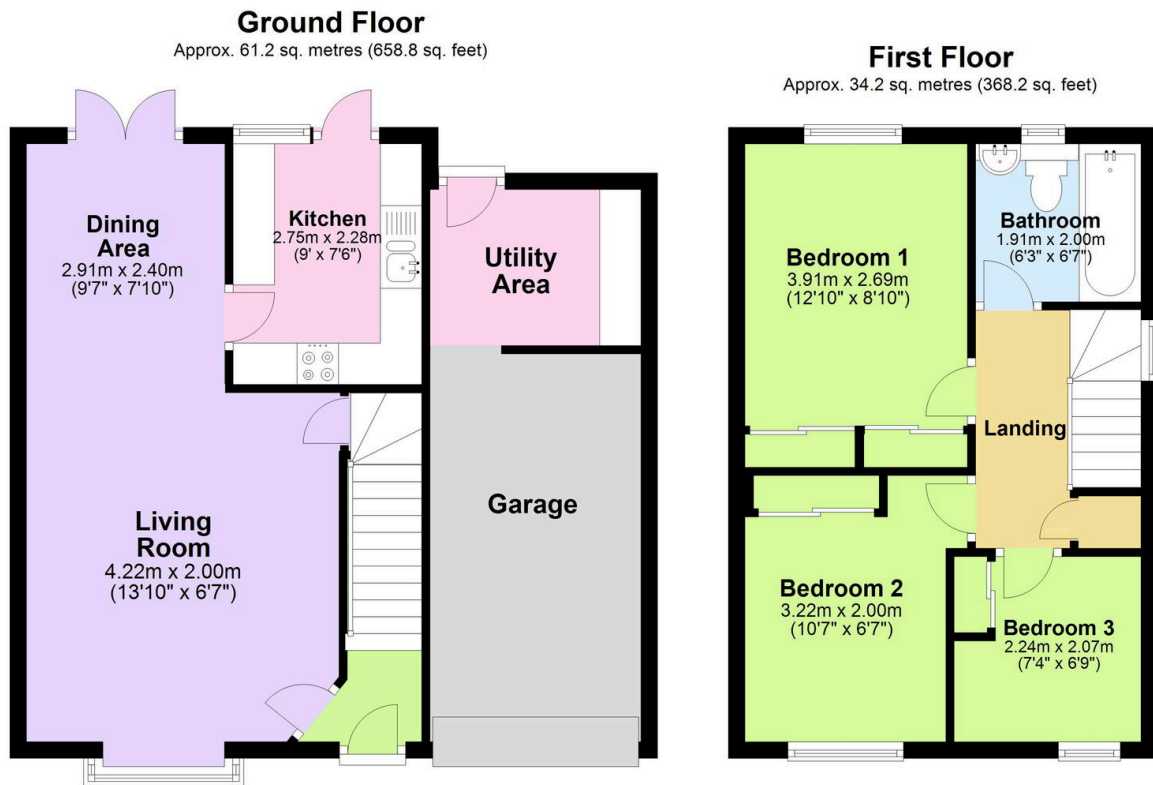
3 1 1



Step inside to be greeted by a spacious lounge/diner with elegant wooden flooring and stunning French doors that flood the space with natural light, this versatile living area creates the ideal environment for both relaxation and entertaining. The seamless flow opens up to a contemporary kitchen that will delight any home cook with integrated appliances. The property boasts three well-proportioned bedrooms, all with built-in wardrobes, complemented by a stylishly appointed bathroom. Outside, a wonderful enclosed rear garden awaits, offering a private outdoor sanctuary with a carefully designed layout featuring newly fitted composite decking, lush lawn, and useful raised decking area – perfect for summer gatherings or quiet moments of relaxation.

## Key Features

- Freehold - Council Tax Band C - EPC C
- Three Well-Proportioned Bedrooms
- Contemporary Kitchen
- Enclosed Level Rear Garden
- Driveway Parking For Two Vehicles
- Immaculately Presented Semi-Detached Home
- Stylish Family Bathroom
- Spacious Lounge/Diner
- Garage & Utility Space
- Quote BH0675 To Book Your Viewing



Total area: approx. 95.4 sq. metres (1027.0 sq. feet)