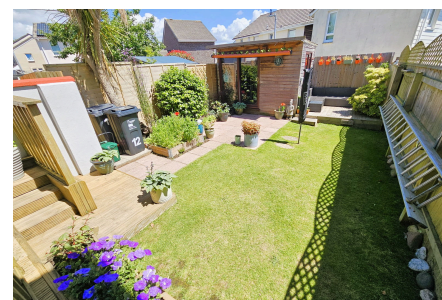
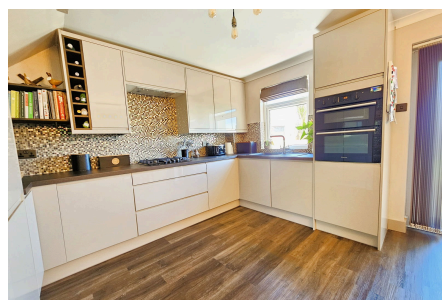
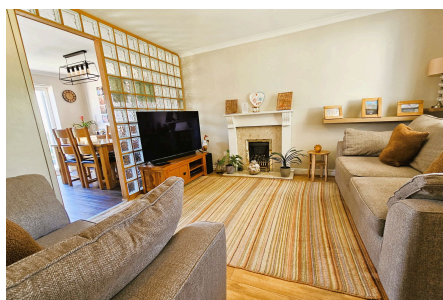


Prospect Walk, Lower Burraton, Saltash

Guide Price £270,000

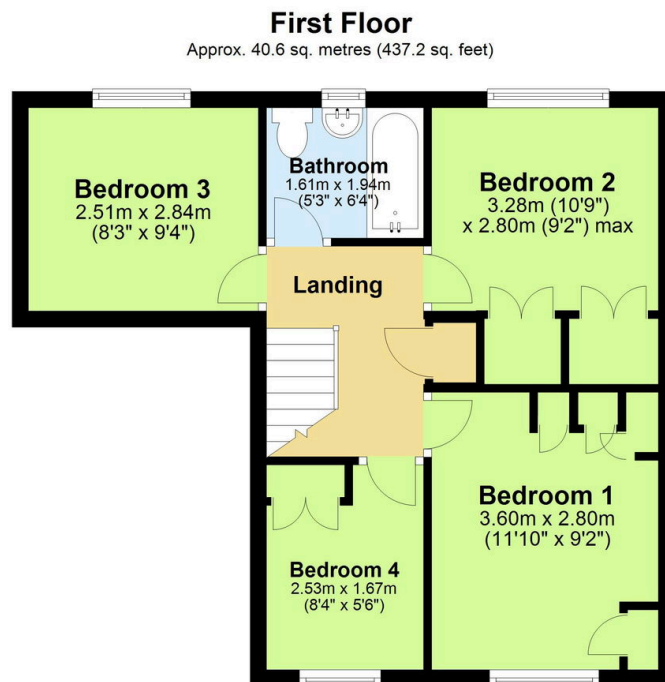
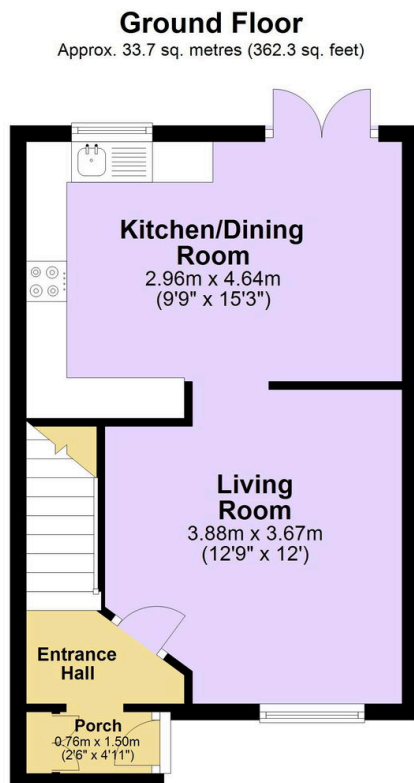
4 1 2



Step inside and be greeted by a warm and inviting atmosphere, with a spacious living room boasting a large window that floods the space with natural light. The kitchen has been completely transformed with brand new cabinets, worktops & built-in appliances creating a sleek & stylish look with soft grey tones. The dining area is generously sized with doors leading out to the raised decking. Upstairs, you'll find four well-proportioned bedrooms, with built in storage and a modern family bathroom. Outside, the private rear garden is enclosed and easy to maintain, offering a secluded oasis for alfresco dining & entertaining. Other highlights include a single garage in a nearby block, handy porch, newly fitted front & internal doors along with new carpets.

Key Features

- Freehold - Council Tax Band D - EPC TBC
- Four Good-Sized Bedrooms
- Lovely Enclosed Rear Garden With Lawn & Decking
- Handy Porch
- Garage In a Bock
- Immaculately Presented Semi-Detached Family Home
- Brand New Kitchen With Built-In Appliances
- Spacious Living Room
- New Front and Internal Doors & Carpets
- Quote BH0675 To Book Your Viewing Today



Total area: approx. 74.3 sq. metres (799.4 sq. feet)