

Farway Gardens, Codsall, Wolverhampton, WV8 2QA

Guide Price £600,000

4 3 2



Stunning family home with **four large bedrooms** set within a prime position in this popular development, this beautifully designed residence by renowned local builders Messrs David Payne is among the finest properties in the cul-de-sac. The layout is thoughtfully crafted to accommodate modern family life, offering spacious, well-appointed living spaces across two floors.

Codsall not only a convenient location but a sound investment opportunity as well.

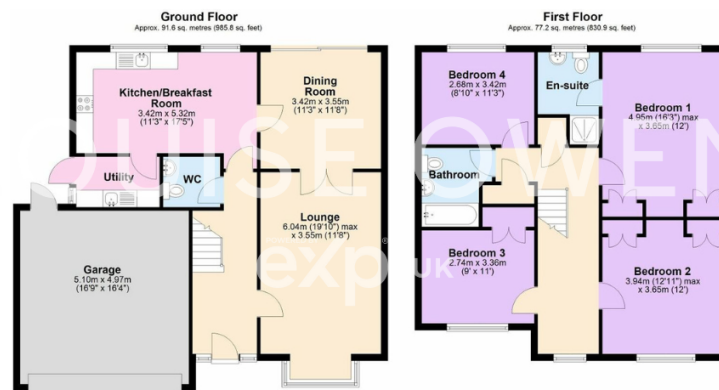
With its prime location, ease of commute, and dynamic business potential, Codsall is proving to be a standout choice for professionals and businesses looking to thrive in the heart of the Midlands.

1616.87 Sq ft of accommodation

Property Ref LO 0765

Key Features

- Desirable Village location
- Double garage with private driveway
- Quality double glazing throughout
- Walking distance to local train stations
- Close to local shops and amenities
- Four Double Bedrooms
- New carpets throughout
- 3 Bathrooms
- Quiet cul-de-sac location



Total area: approx. 168.8 sq. metres (1816.7 sq. feet)