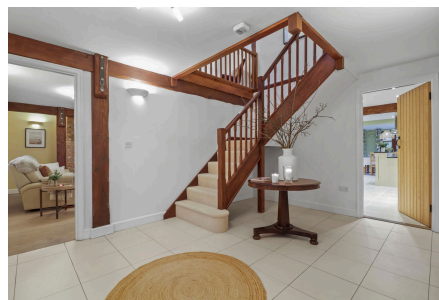


Ashwells Lane, Yelvertoft, Northampton, NN6 6LW

Offers Over £800,000

5 4 3

**Chestnut House, Yelvertoft****OPEN HOUSE - Sunday 15th December 2 pm - 4 pm****PLEASE CONTACT THE AGENT TO REGISTER YOUR INTEREST AND TO ATTEND THE OPEN HOUSE EVENT**

Nestled in the heart of the charming Northamptonshire village of Yelvertoft, Chestnut House is a remarkable **five-bedroom** detached family home that radiates character and warmth. Built in

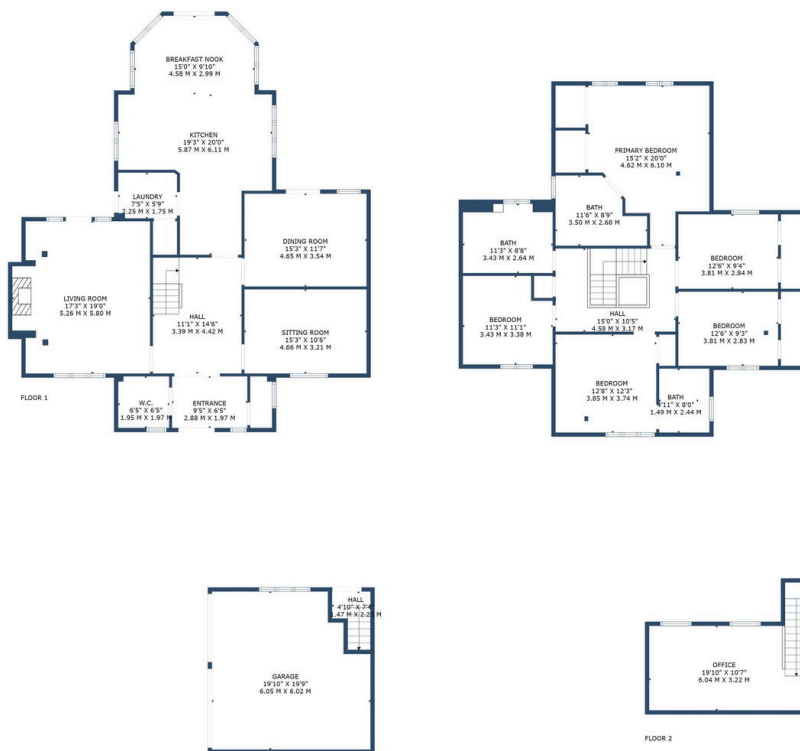
2003, this hidden gem sits discreetly at the end of a private drive serving two properties off Ashwells Lane, offering a perfect blend of seclusion and village life.

Crafted with care, the home's timber frame, inspired by Potton's elegant Waresley design, adds a unique touch of architectural flair. From its substantial proportions to its thoughtful design, Chestnut House promises a lifestyle of comfort and understated luxury in this sought-after rural setting.

Property ref LO 0765

Key Features

- Popular Village Location
- Two En-Suites
- Lounge with Multi Fuel Stove
- Downstairs Study
- Double garage with Home office above
- Five Double bedrooms
- Superb Kitchen/ Dining Room
- Second Sitting Room/Playroom/Dining
- Detached Property
- Landscaped gardens



TOTAL: 2708 sq. ft, 252 m2
 FLOOR 1: 1465 sq. ft, 136 m2, FLOOR 2: 1243 sq. ft, 116 m2
 EXCLUDED AREAS: GARAGE: 358 sq. ft, 33 m2, LOW CEILING: 273 sq. ft, 26 m2

Floor Plan Created By Harper & Reid. Measurements Deemed Highly Reliable But Not Guaranteed