

DAVID CHARLES

ESTATE AGENTS • VALUERS • SURVEYORS
THE ESTATE OFFICE • 34 HIGH STREET • PINNER • MIDDLESEX HA5 5PW
TELEPHONE 020 8866 0222 • FAX 020 8868 3544
WEBSITE www.david-charles.co.uk • E-MAIL pinner-sales@david-charles.co.uk

CANNON LANE, PINNER, HA5 1HL



£2,500 PCM UNFURNISHED

This bright and well presented three bedroom, two bathroom duplex maisonette (1,103 sq.ft) is located within easy reach of West Lodge Primary School, Cannon Lane Primary School and Nower Hill School. Pinner Village is also within walking distance offering array of shops, restaurants, coffee houses, supermarkets and the Metropolitan Line Tube Station. The bright and spacious accommodation is laid out in a contemporary style with a 19ft Living room which is open plan to the luxurious kitchen with a central dining table/work station and a full range of integrated appliances. The 20ft master bedroom includes a dressing area and an en-suite shower room. There is a second 11ft double bedroom, a 11ft bedroom three and a newly fitted family bathroom. Outside there is a private and secure 40' rear garden with gated access and off street parking at the front. Unfurnished. Available now (subject to References).

020 8866 0222









LOCAL INFORMATION

COUNCIL TAX

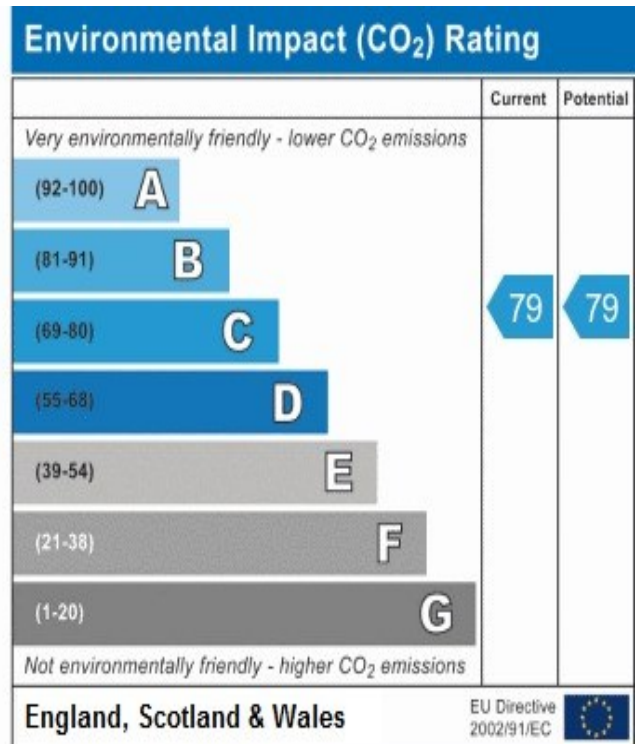
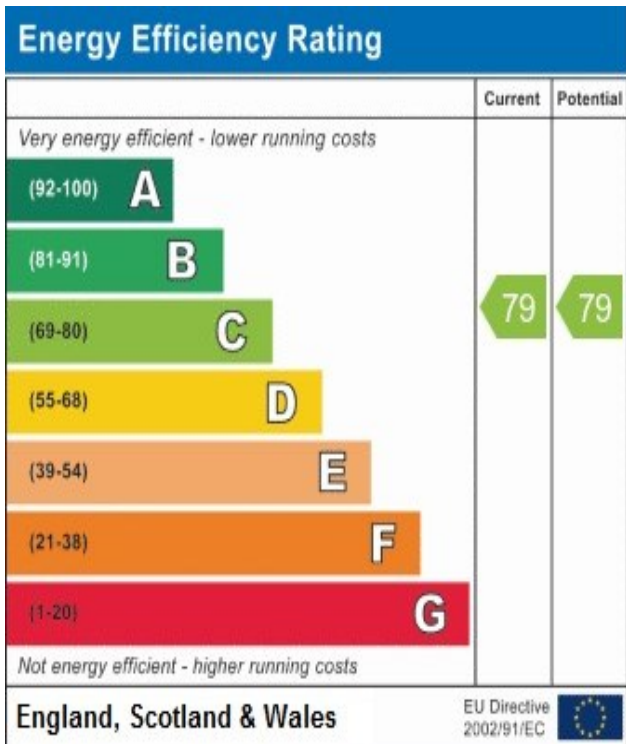
London Borough of Harrow - Band C £2,032.28

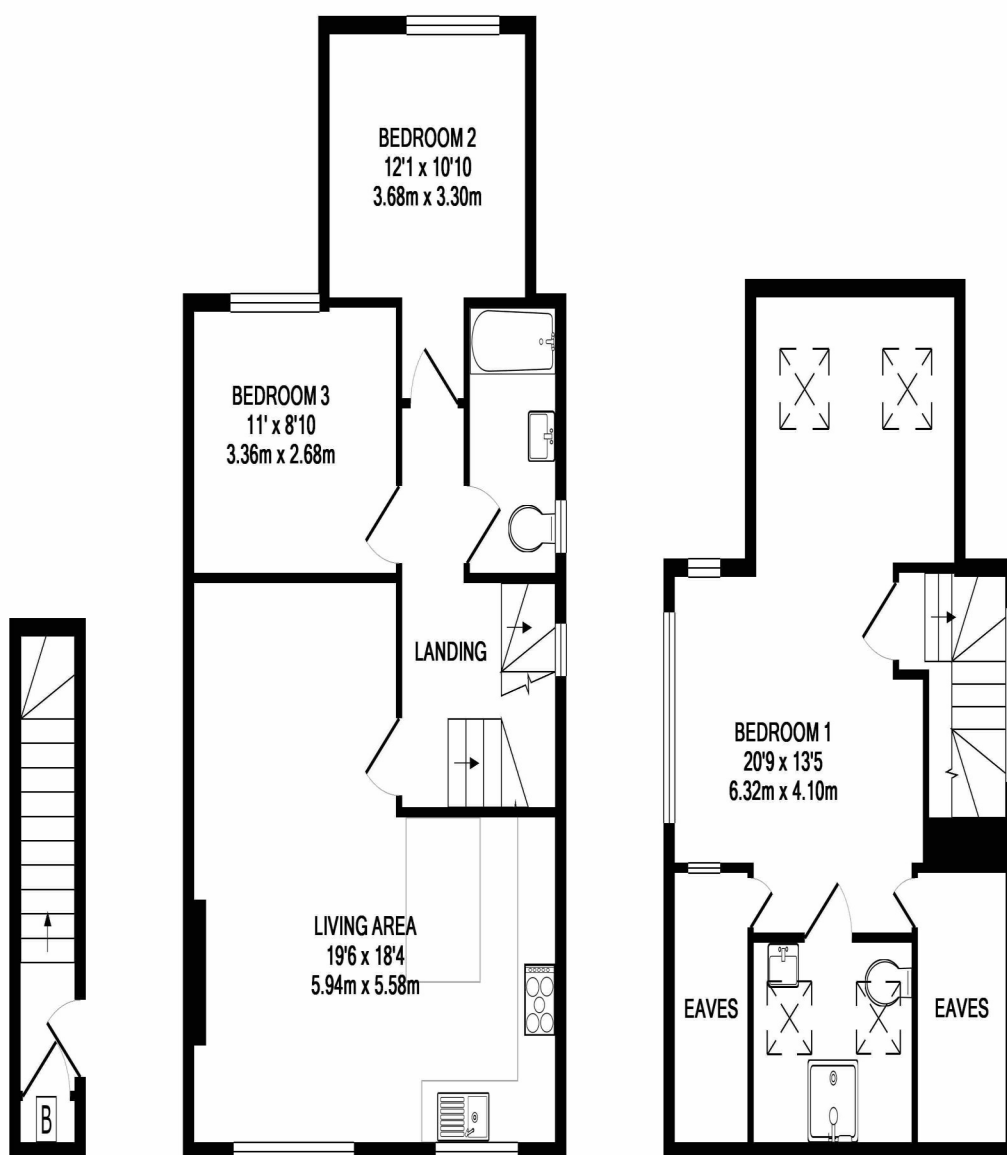
LOCAL SCHOOLS

Reddiford Independent School 0.2 miles
West Lodge Primary School - 0.4miles
St John Fisher Primary School - 0.5 miles
Cannon Lane Primary School 0.5 miles

LOCAL TRANSPORT

Pinner Metropolitan Station - 0.4 miles
Eastcote Metropolitan/Piccadilly Station - 1 mile
Rayners Lane Metropolitan/Piccadilly Line Station - 1 mile





GROUND FLOOR
APPROX. FLOOR
AREA 57 SQ.FT.
(5.3 SQ.M.)

1ST FLOOR
APPROX. FLOOR
AREA 620 SQ.FT.
(57.6 SQ.M.)

2ND FLOOR
APPROX. FLOOR
AREA 426 SQ.FT.
(39.6 SQ.M.)

TOTAL APPROX. FLOOR AREA 1103 SQ.FT. (102.4 SQ.M.)

Whilst every attempt has been made to ensure the accuracy of the floor plan contained here, measurements of doors, windows, rooms and any other items are approximate and no responsibility is taken for any error, omission, or mis-statement. This plan is for illustrative purposes only and should be used as such by any prospective purchaser. The services, systems and appliances shown have not been tested and no guarantee as to their operability or efficiency can be given
Made with Metropix ©2019

For appointments to view please call David Charles 020 8866 0222

All measurements are taken manually and whilst every care is taken with their accuracy they must be considered approximate and should not be relied upon when purchasing carpets or furniture. No responsibility is taken for any error, omission or misunderstanding in these particulars which do not constitute an offer or contract. Services and appliances have not been tested and therefore no warranty is offered on their operational condition.